

# **The XFEL Beam Dynamics Website**

News and Updates to the Start-to-End Simulations

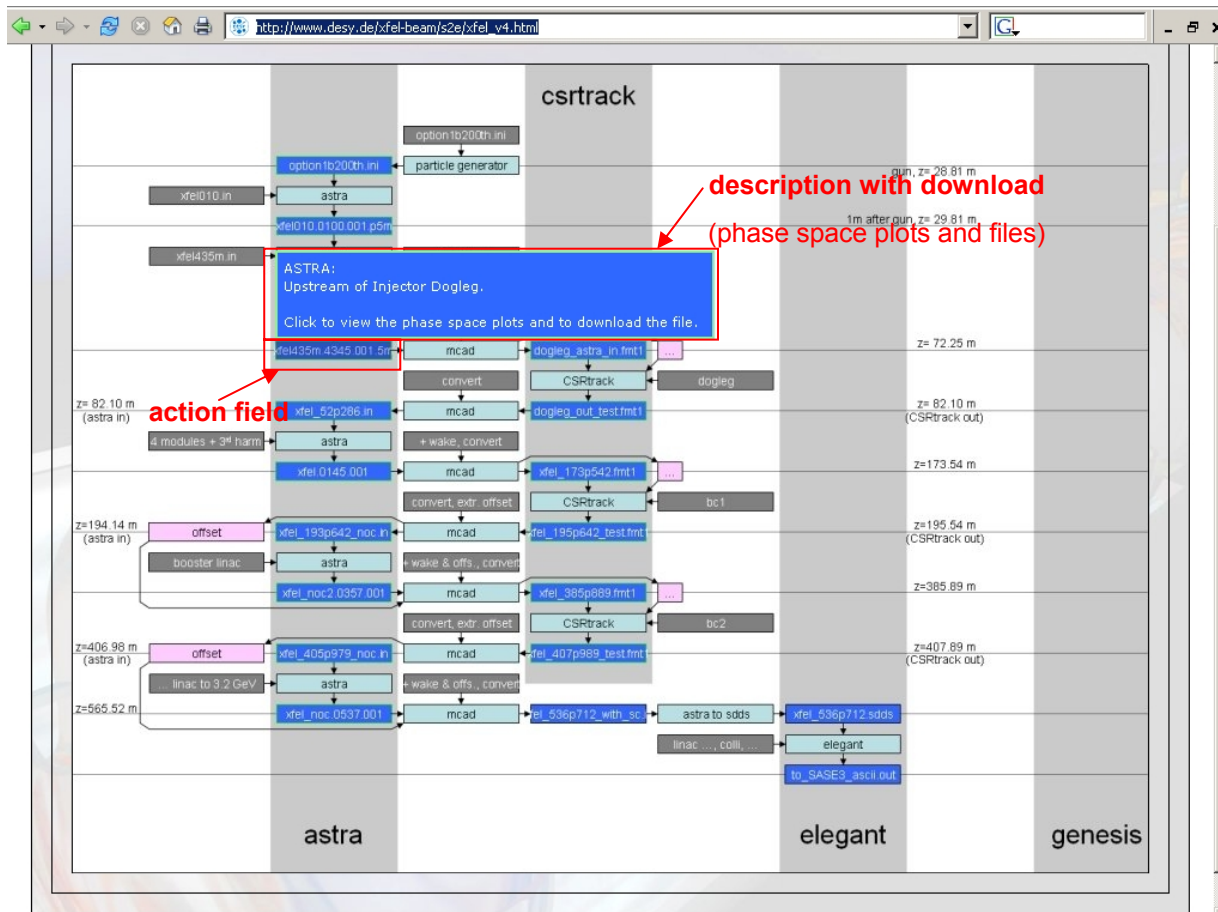
Bartosz Poljanecwicz

03.04.2006

# News and Updates

- New Start-to-End Simulation online  
<http://www.desy.de/xfel-beam/> → Start-to-End Simulations →  
Start-to-End Simulation for the European XFEL 2006
- New layout  
→ image map instead of text and tables
- Action fields with pop-up descriptions, plots and downloads
- Cross browser compatible  
(tested with Internet Explorer 6 with SP2, Firefox 1.5.0.1, Mozilla 1.7.8)

# Start-to-End Simulation for the European XFEL 2006



# Pop-up Windows

