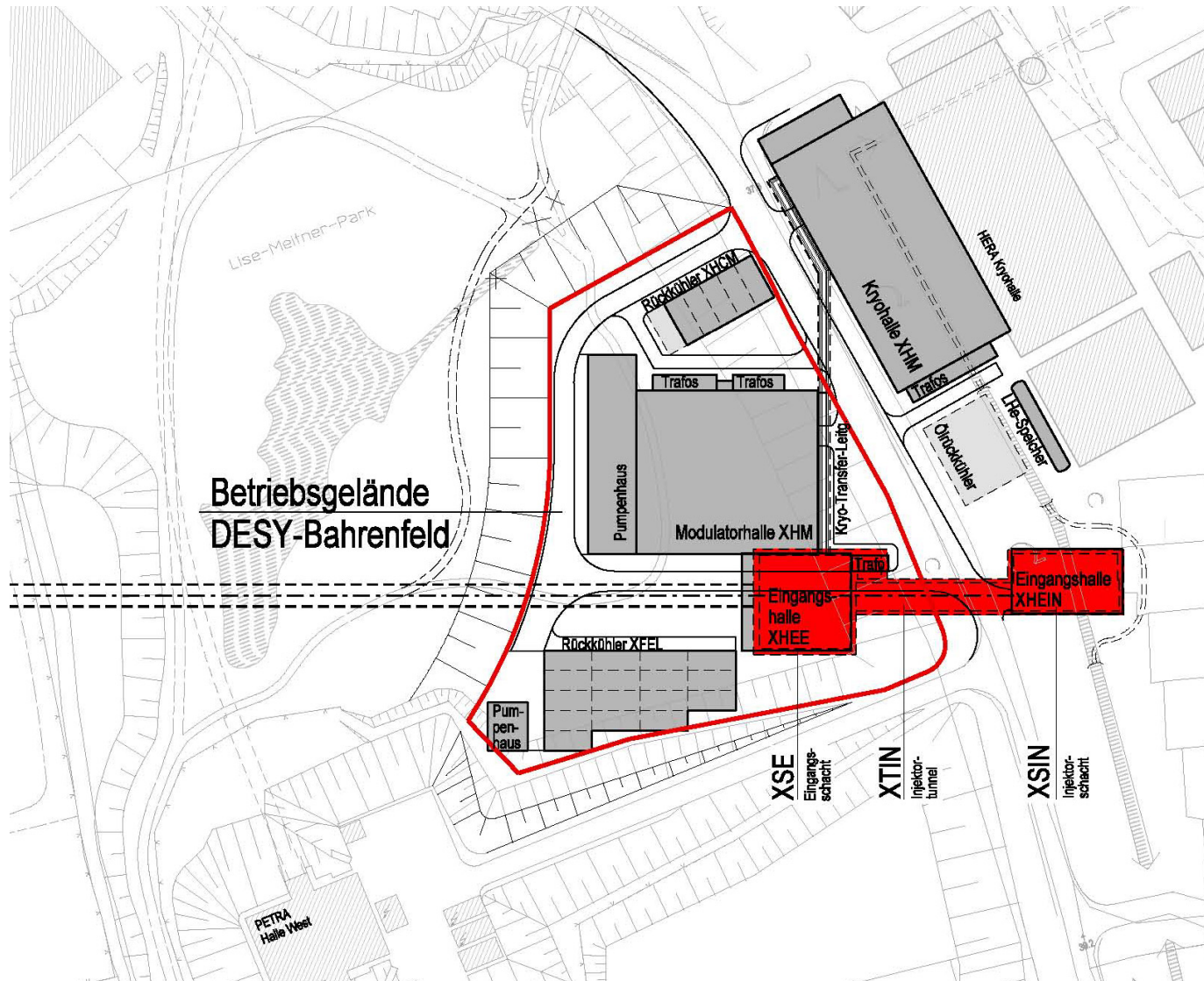


# Review XFEL Injector Introduction

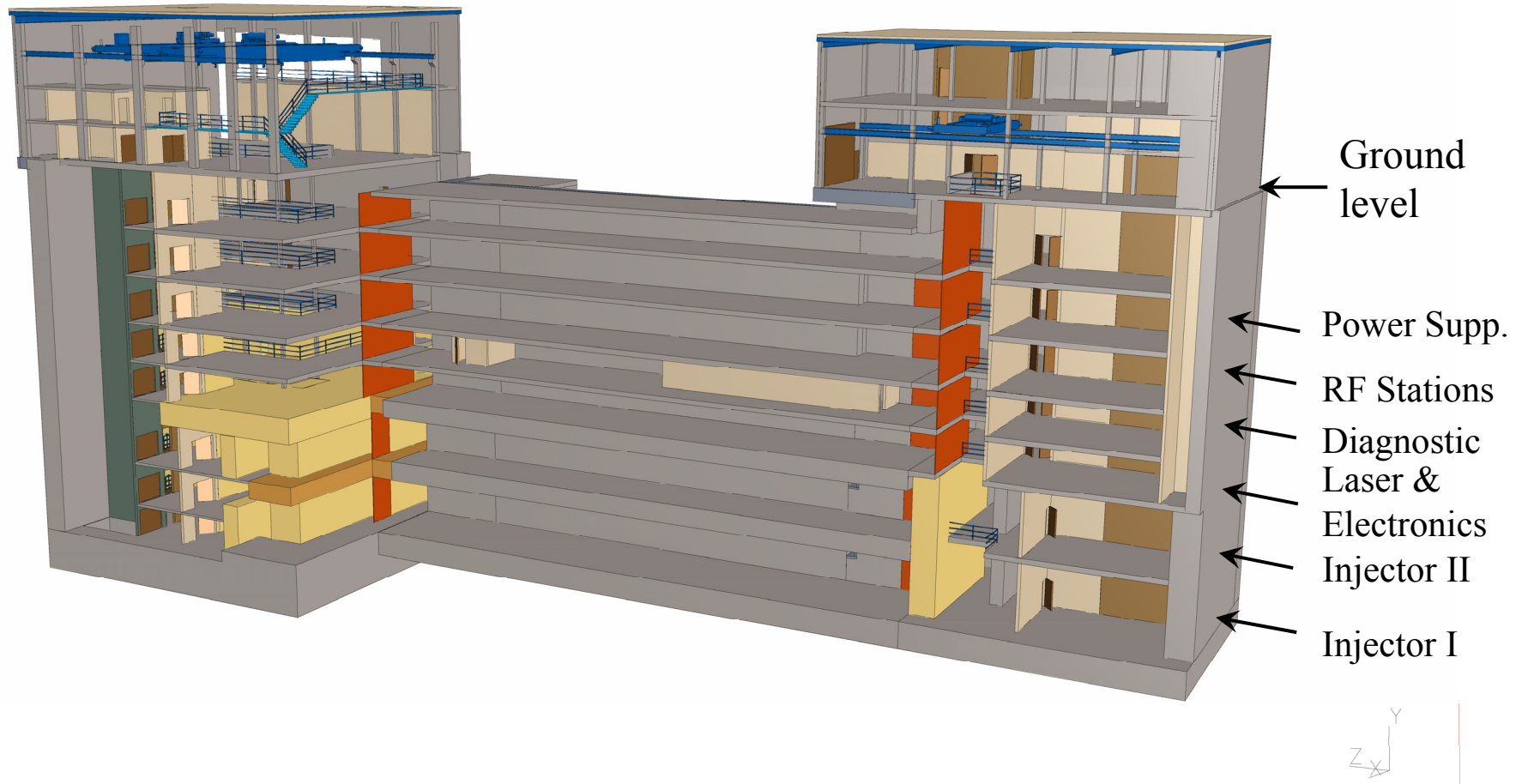
K. Floettmann

23.10.06

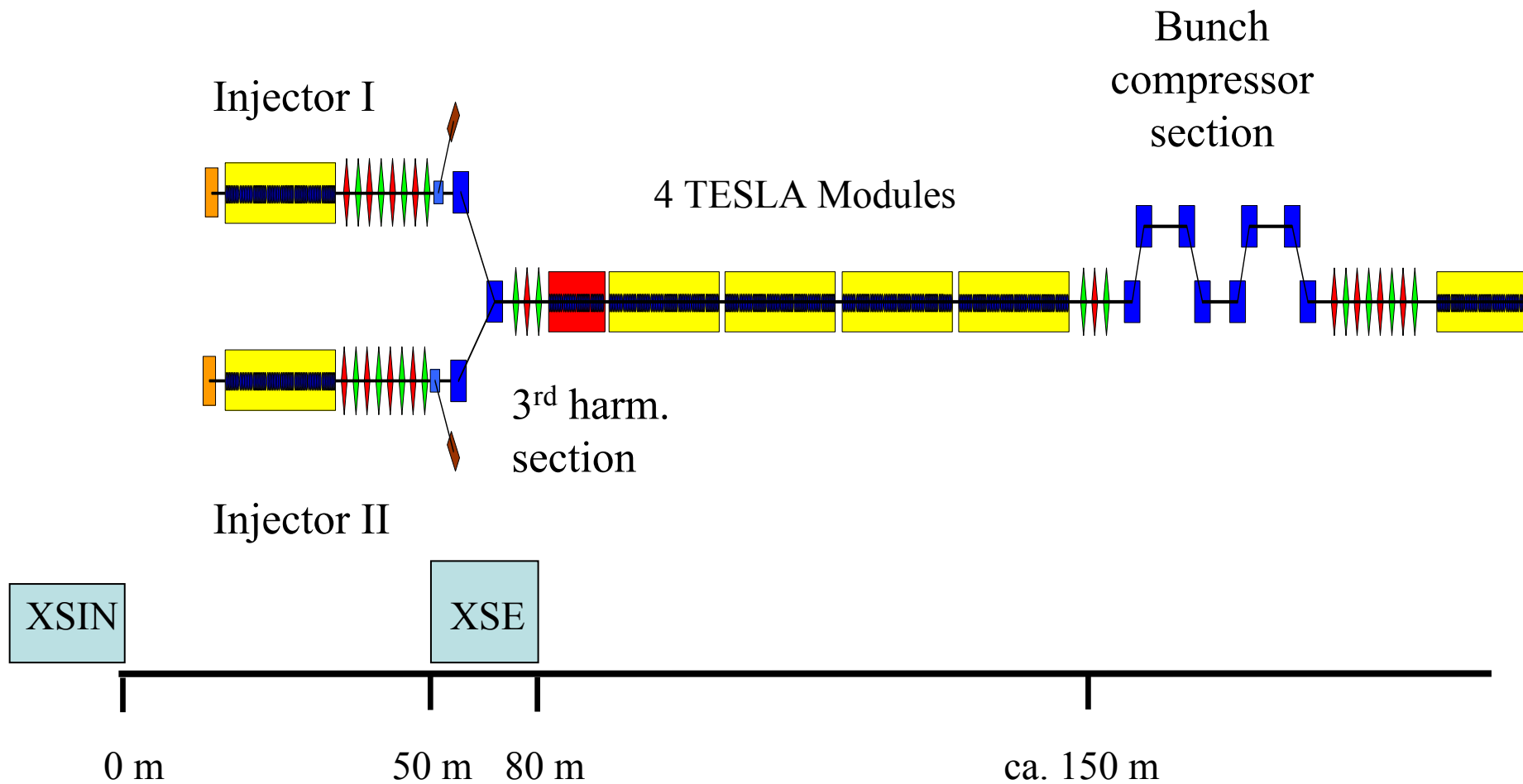
# Übersichtsplan



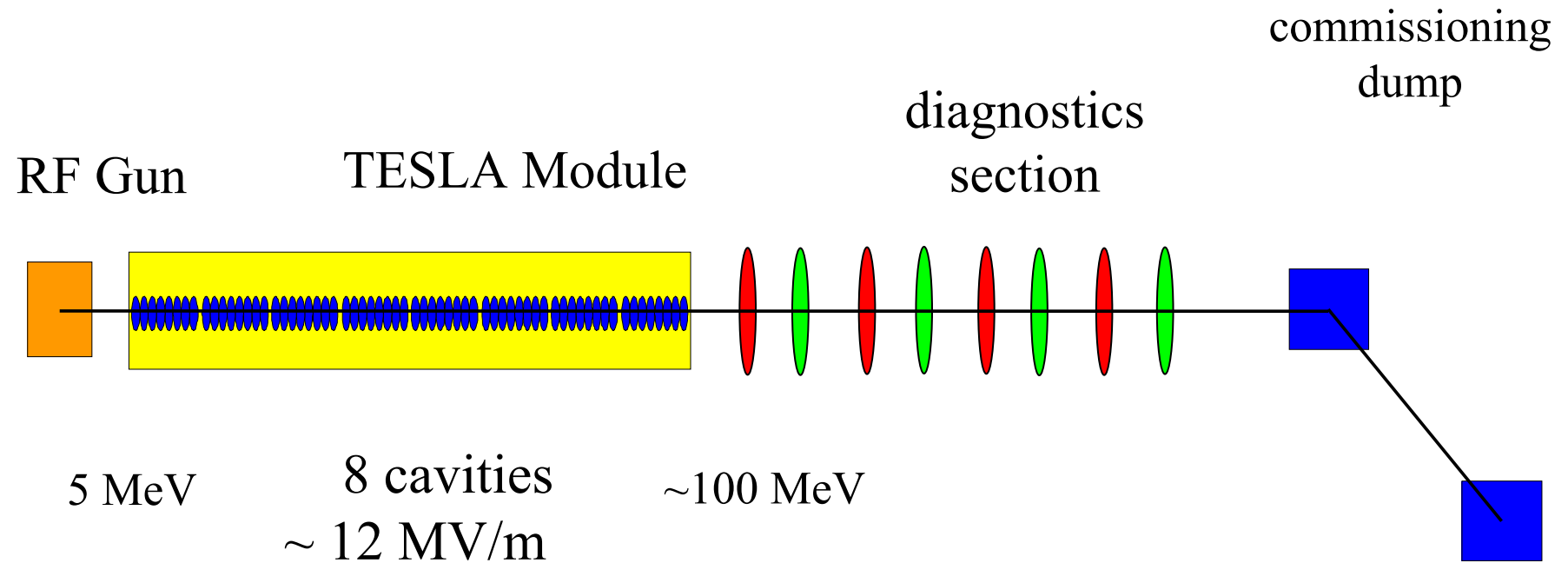
# Side View of the Injector Building



# Schematic overview of the TESLA XFEL Injector

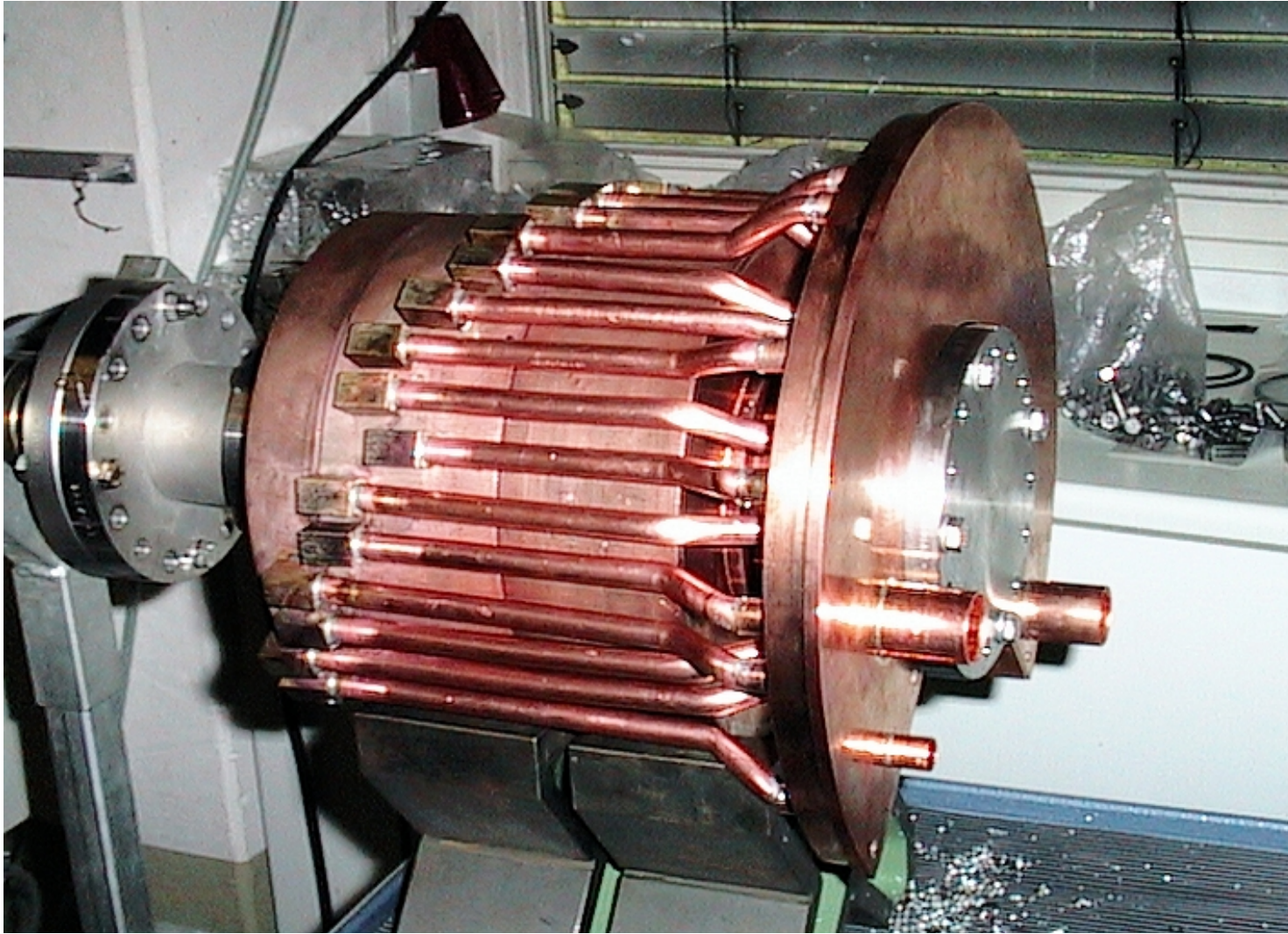


# Schematic overview of the TESLA XFEL Injector





# RF Gun in the Workshop



# Special RF Components for the RF Gun

- ✓ high power T-combiner
- ? high power RF window
- ? high power, high precision directional coupler



# Gun Diagnostics Section

- new design for Flash in preparation
- components will be used for XFEL
- more space between gun and 1<sup>st</sup> module
  - more diagnostics components ?
  - dark current kicker ?