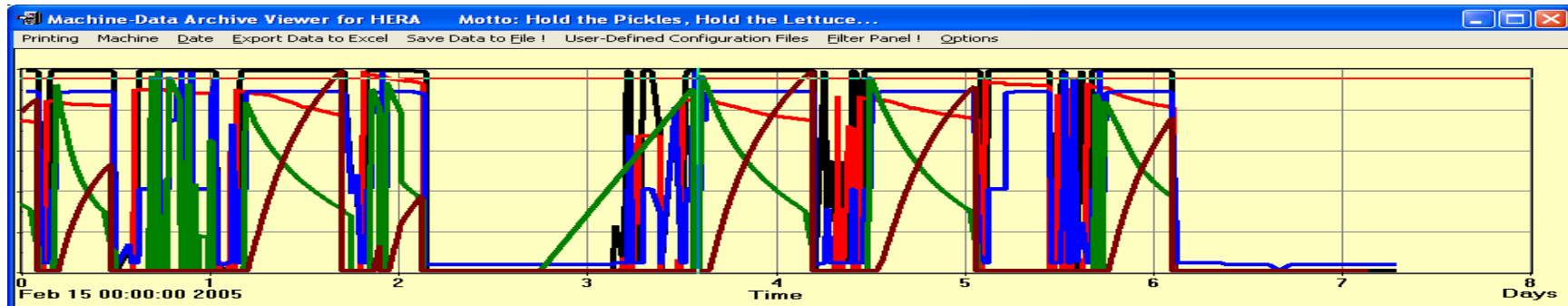


HERA Week #7

Feb. 14-21, 05



- Peak Luminosity exceeds $4 \cdot 10^{31} \text{ cm}^{-2} \text{ s}^{-1}$ ($4.8 \cdot 10^{31} \text{ cm}^{-2} \text{ s}^{-1}$ measured at H1 on Feb16)
- Luminosity Production: slowed down by scheduled and unscheduled breaks

$$\int L dt = 5.2 \text{ pb}^{-1}$$

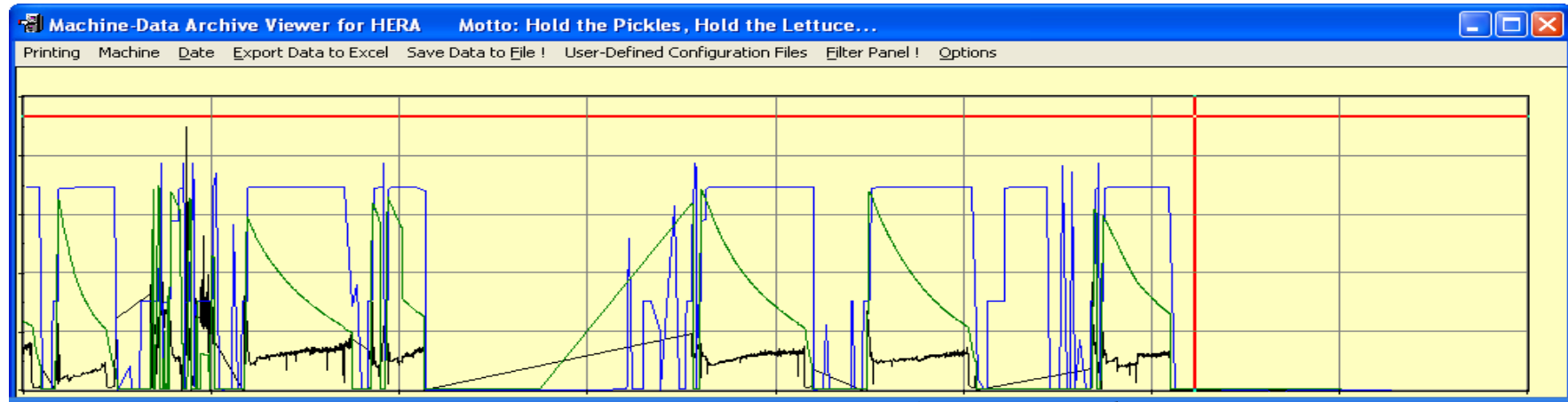
- Polarization Tuning: No progress

- Backgrounds:

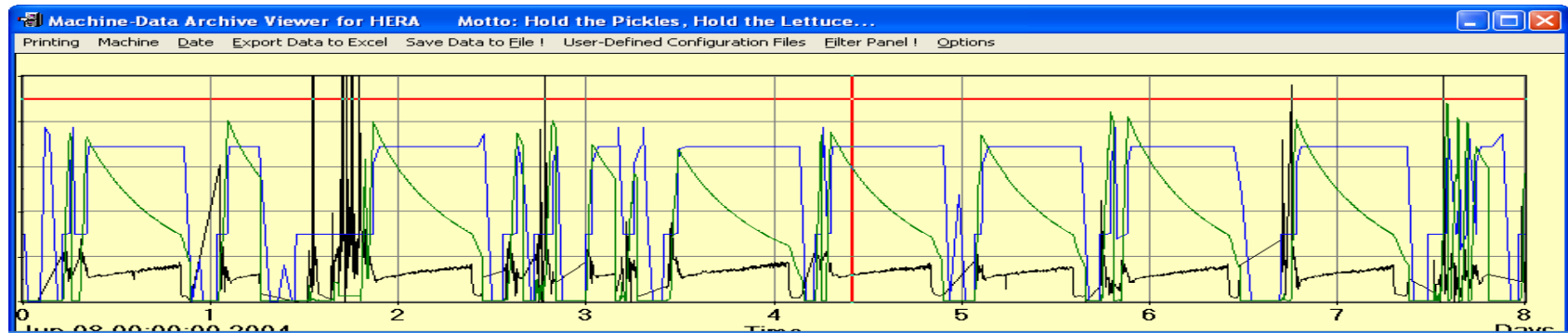
Slow Background produced by distortion SR ~60m @ BZ56SR , BU SR
p-Orbit Feedback helps,

Technical Problems: Cryogenics failure

e-Lifetime Effects



Occasional breakdowns



June 2004