

- pre-Defined Configurations (dbl click)
- HERA Overview
  - HauptStations A+B NEW!!!
  - HauptStation C NEW!!!
  - Coasting Protons
  - 52-208 MHz Phases
  - T-Pol Ave. Polarization

- SubSystem/Search
- All Systems
- TPOLpol5
- TPOLvmeas
- ZBeamTempStatu:
- ZBeamTempValue
- ZC5Rates
- ZC5Reserved
- ZCALinhibit
- ZCALStatus
- ZCALTimeStamp
- ZCTDRates
- ZDATAC5EX
- ZDATAC5MEAN
- ZDATAC5RMS
- ZDiodeCur

Selected Trace: #2

Clear Plot Array

Lin

1.00E+05 Max Punkte / Total

0.0 Min 1993 / 392622

0.0 Offset

Re-Scale AutoScale

Default Scale

February 2005

Mon	Tue	Wed	Thu	Fri	Sat	Sun
31	1	2	3	4	5	6
7	8	9	10	11	12	13
14	15	16	17	18	19	20
21	22	23	24	25	26	27
28	1	2	3	4	5	6
7	8	9	10	11	12	13

Today: 14/02/2005

Cursor Position:

Time: Wed Feb 09 12:11:13.920 CET 2005 UTC: 1107947473

HPDCCur 63.75mA Proton Current

HEDECCur 23.66mA Electron Current

ZC5Reserved[1] 3.014.20Hz ZEUS C5-Block Reserved [C5 proton]

Display Windows

Main  Correlations

Text

Extra Digits

Chubby Lines

All Data Scaled: Min:Max = 0:100

Auto Scale: Each Trace Separately

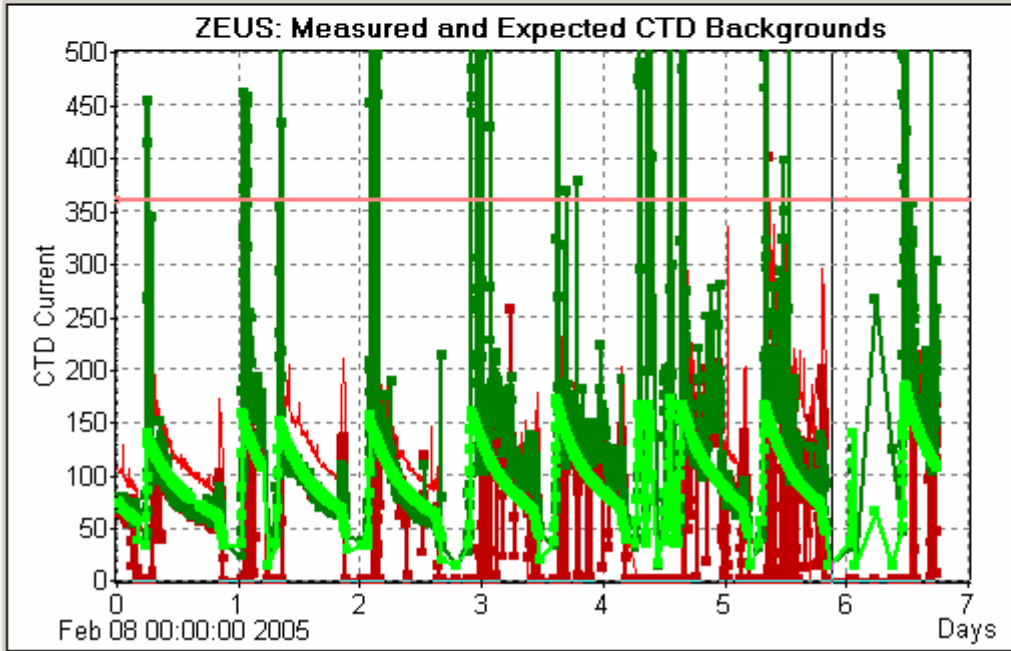
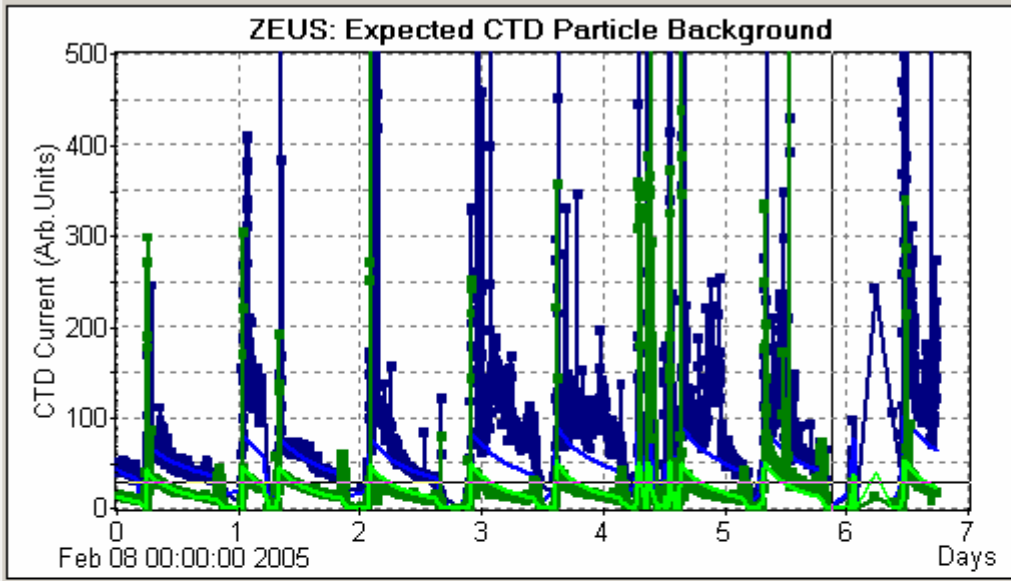
Line+Dots

Live Data

Clear All

**ZEUS CTD+C5 Background Display**

Printing Graphics Options Version Select Experiment



February 2005

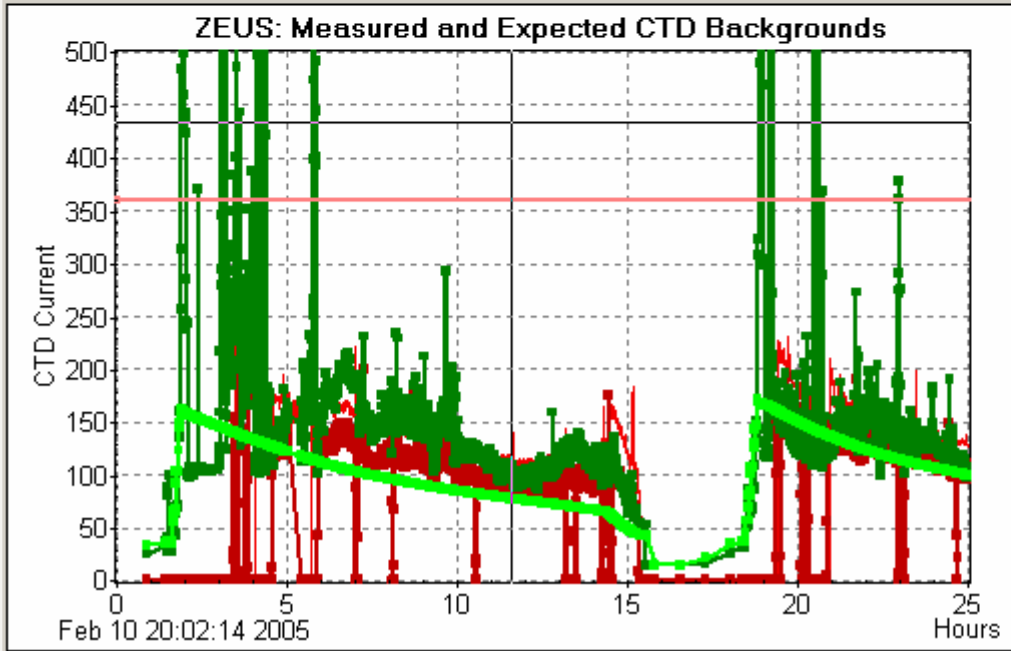
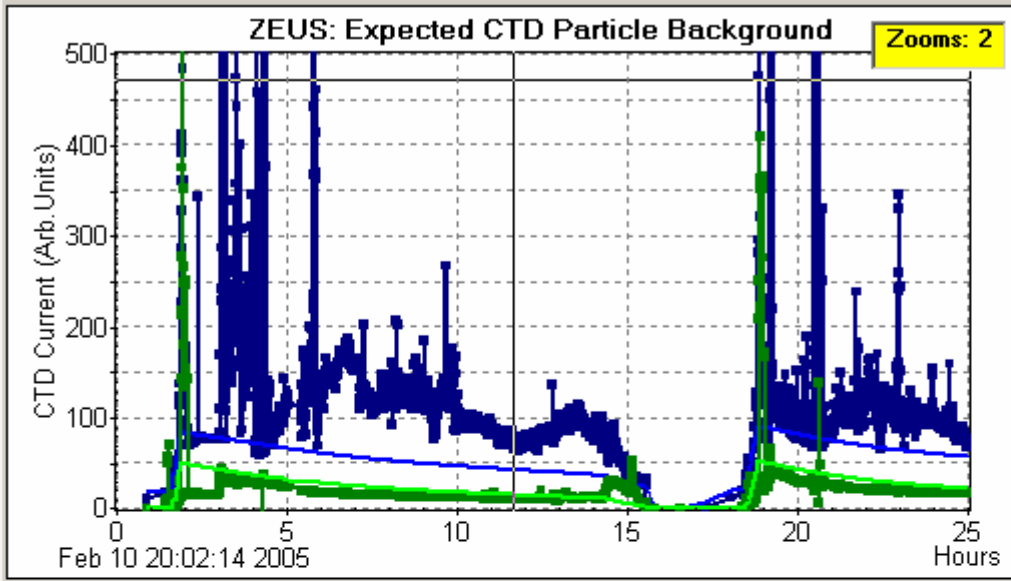
Mon	Tue	Wed	Thu	Fri	Sat	Sun
31	1	2	3	4	5	6
7	8	9	10	11	12	13
14	15	16	17	18	19	20
21	22	23	24	25	26	27
28	1	2	3	4	5	6
7	8	9	10	11	12	13

Today: 14/02/2005

Live Data  Display Extra Info

	Cursor	Now
CTD_p_C5	15.30	105.06
CTD_p_elp	20.08	62.62
CTD_e_C5	0.31	15.66
CTD_e_elp	0.02	21.64
RTD_Calib	-1.00	152.00
CTD_Meas	0.24	125.00
CTD_C5	30.61	135.72
CTD_elp	35.11	106.70

Now: Mon Feb 14 18:07:26.000 CET 2005  
 Cursor: Sun Feb 13 21:07:12.000 CET 2005



February 2005

Mon	Tue	Wed	Thu	Fri	Sat	Sun
31	1	2	3	4	5	6
7	8	9	10	11	12	13
14	15	16	17	18	19	20
21	22	23	24	25	26	27
28	1	2	3	4	5	6
7	8	9	10	11	12	13

Today: 14/02/2005

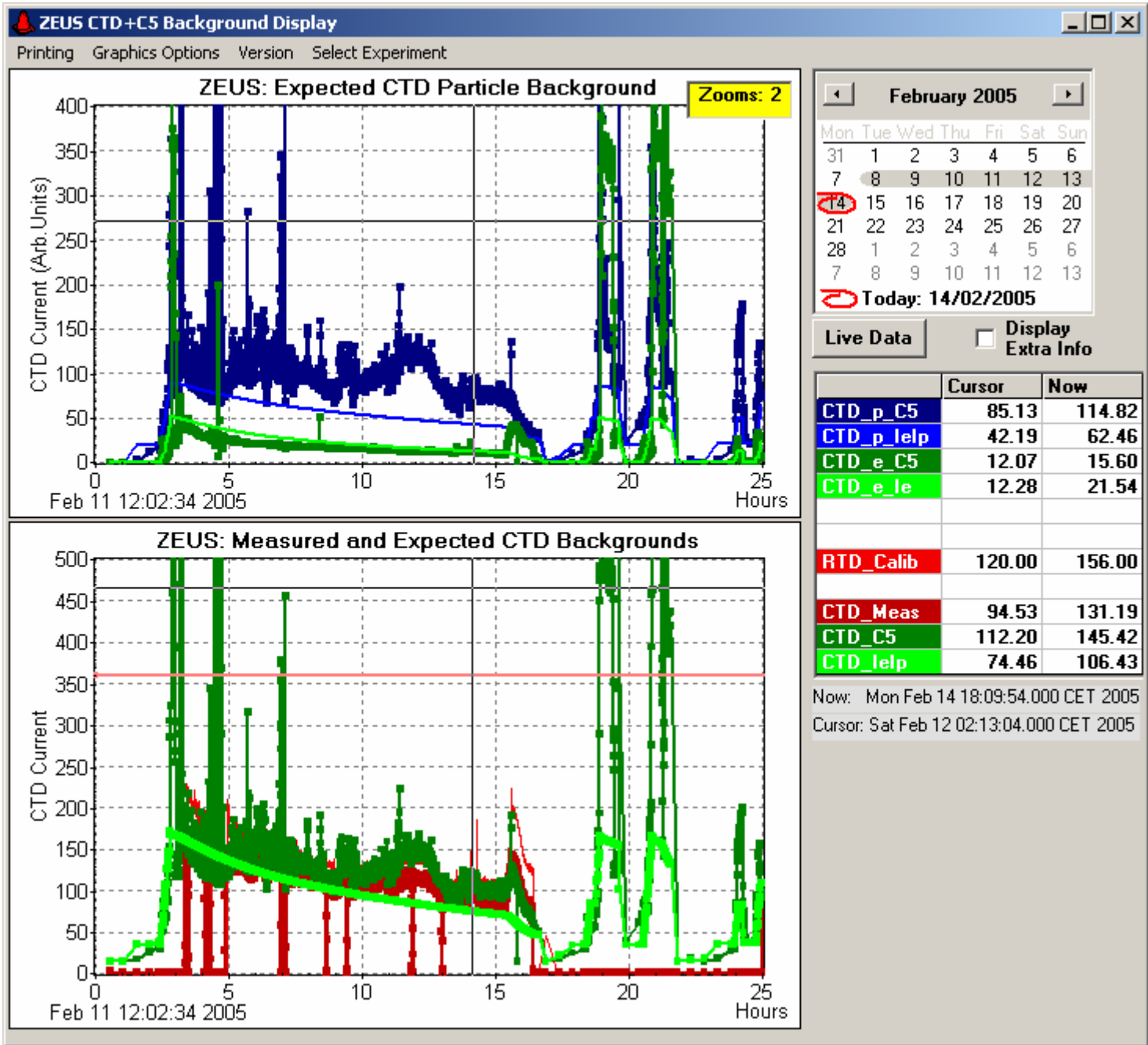
Live Data

Display Extra Info

	Cursor	Now
CTD_p_C5	67.78	166.64
CTD_p_elp	42.09	62.52
CTD_e_C5	10.04	15.19
CTD_e_elp	14.47	21.57
RTD_Calib	110.00	169.00
CTD_Meas	85.53	144.67
CTD_C5	92.81	196.83
CTD_elp	77.17	106.52

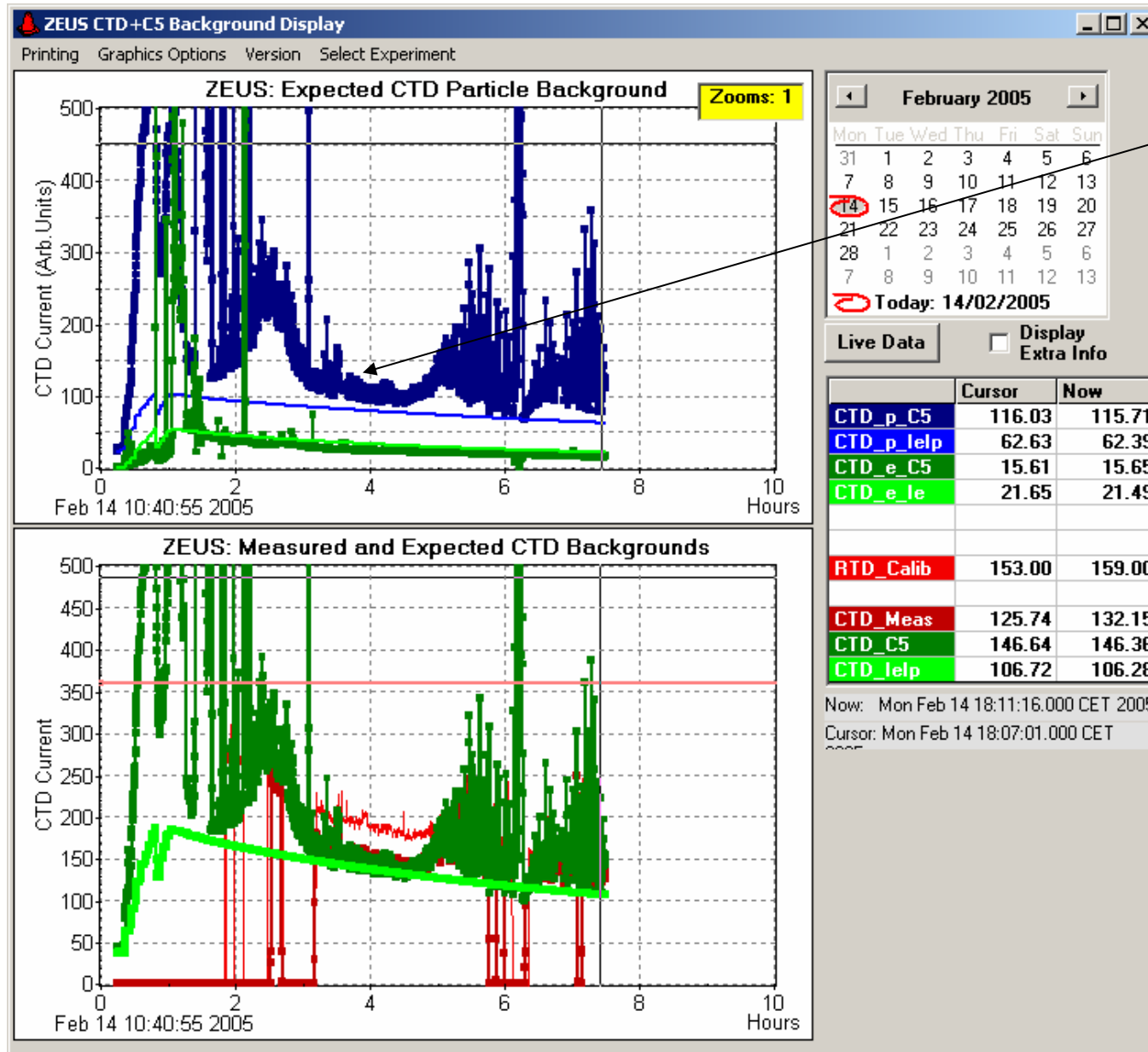
Now: Mon Feb 14 18:09:03.000 CET 2005

Cursor: Fri Feb 11 07:40:56.000 CET 2005

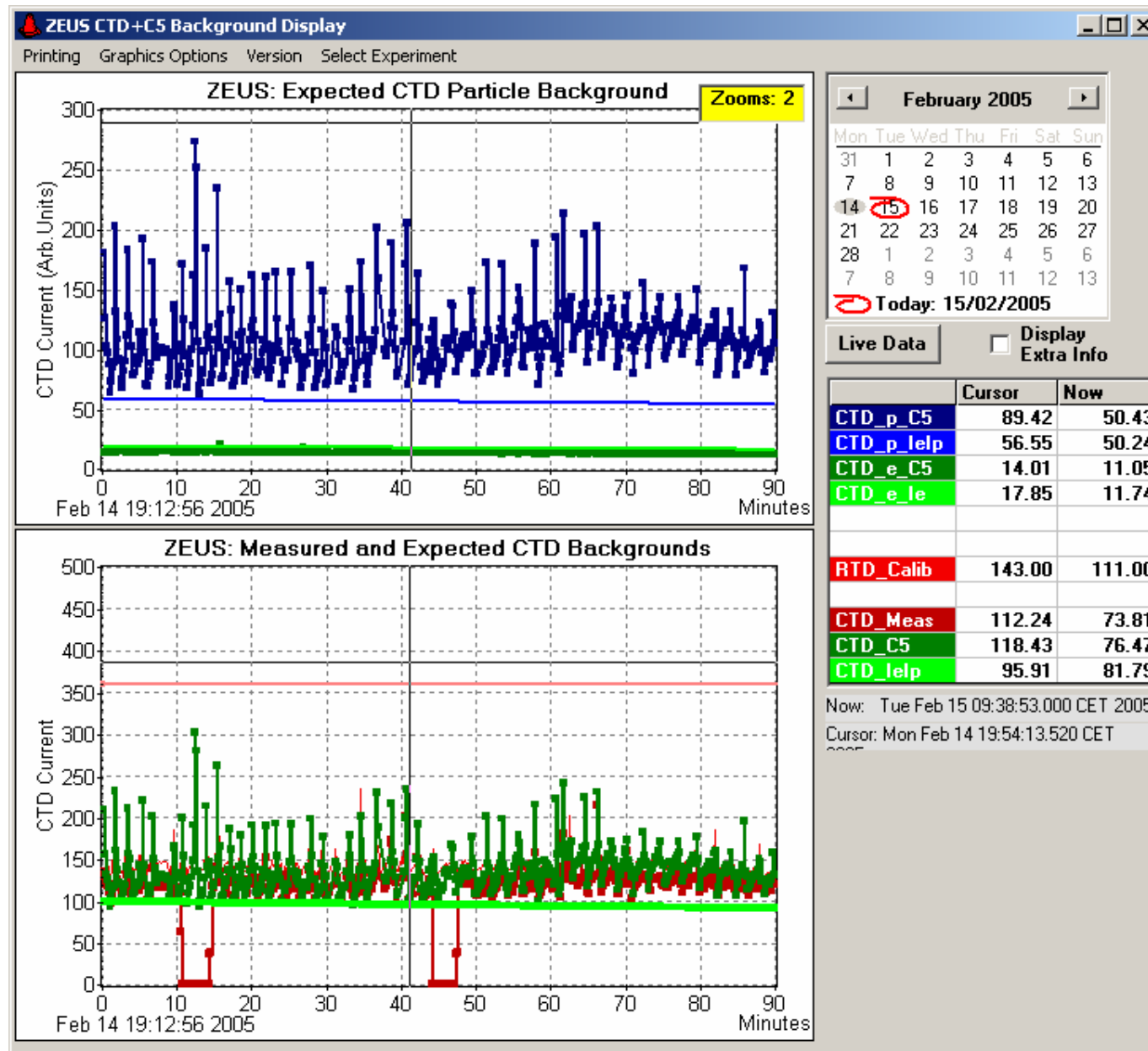


# First Run with 150 Bunches

This looked very promising....



Not so nice.....



Also today this feature is still with us...

