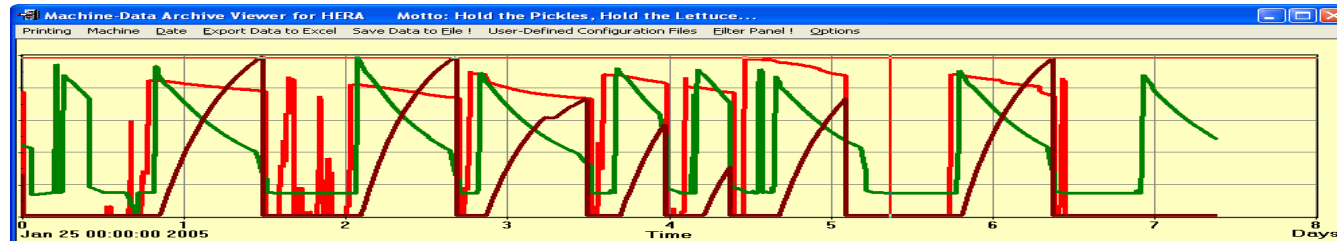
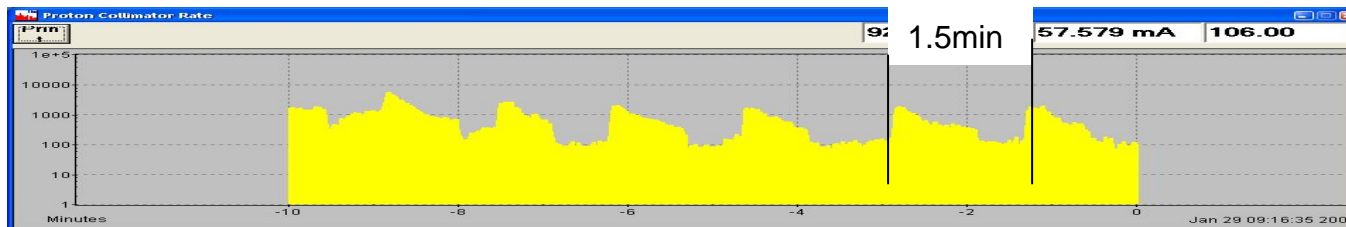


HERA Week# 4 '05



Luminosity production satisfactory $\int_{w4} Ldt=4.85 \text{ pb}^{-1}$, 7 runs
peak $3.75 \cdot 10^{31} \text{ cm}^{-2} \text{ s}^{-1}$ (H1)

Backgrounds still very critical, source of problem still not understood



2 runs with 24 pilot-bunches, premature

Polarization: ok for non-colliding >40%, strong beam-beam effects →

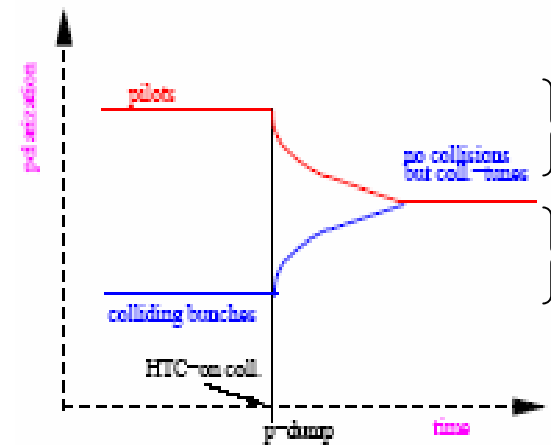
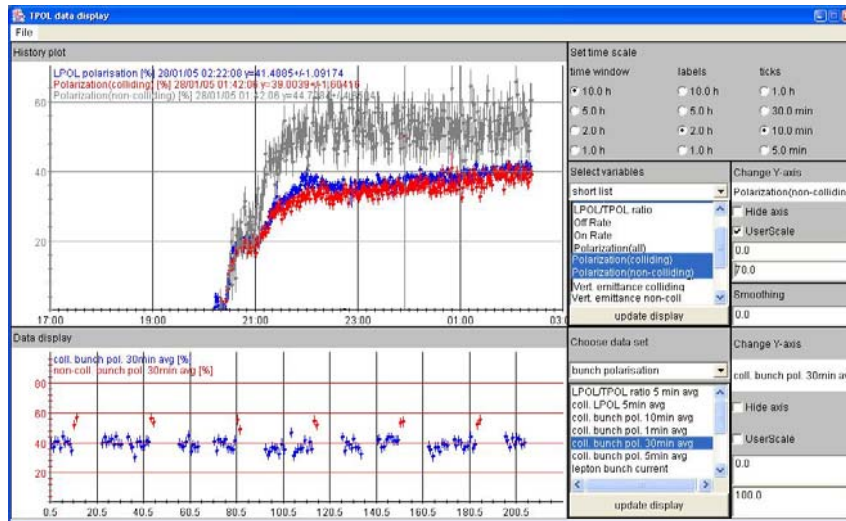
Overall luminosity efficiency continues to be poor 46.3%

Problem of the week: Quench protection electronics broken

Polarization

Out come of polarization experiment

Last week



bb-Tune effect

bb effect

Tuning with bump continued, all but one of the relevant bumps are optimized, bump tuning very time consuming

Beam-Beam effect clearly visible