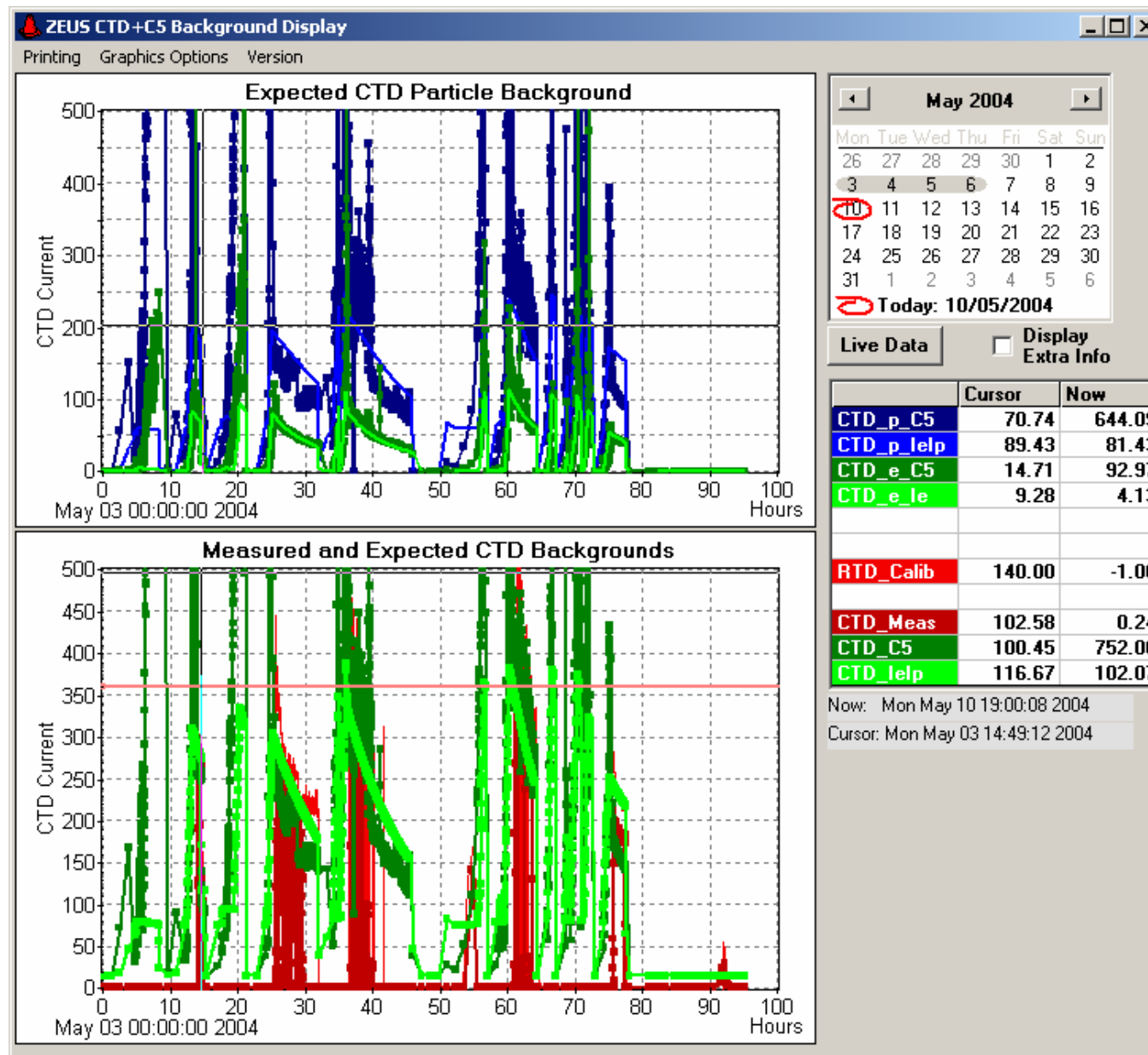
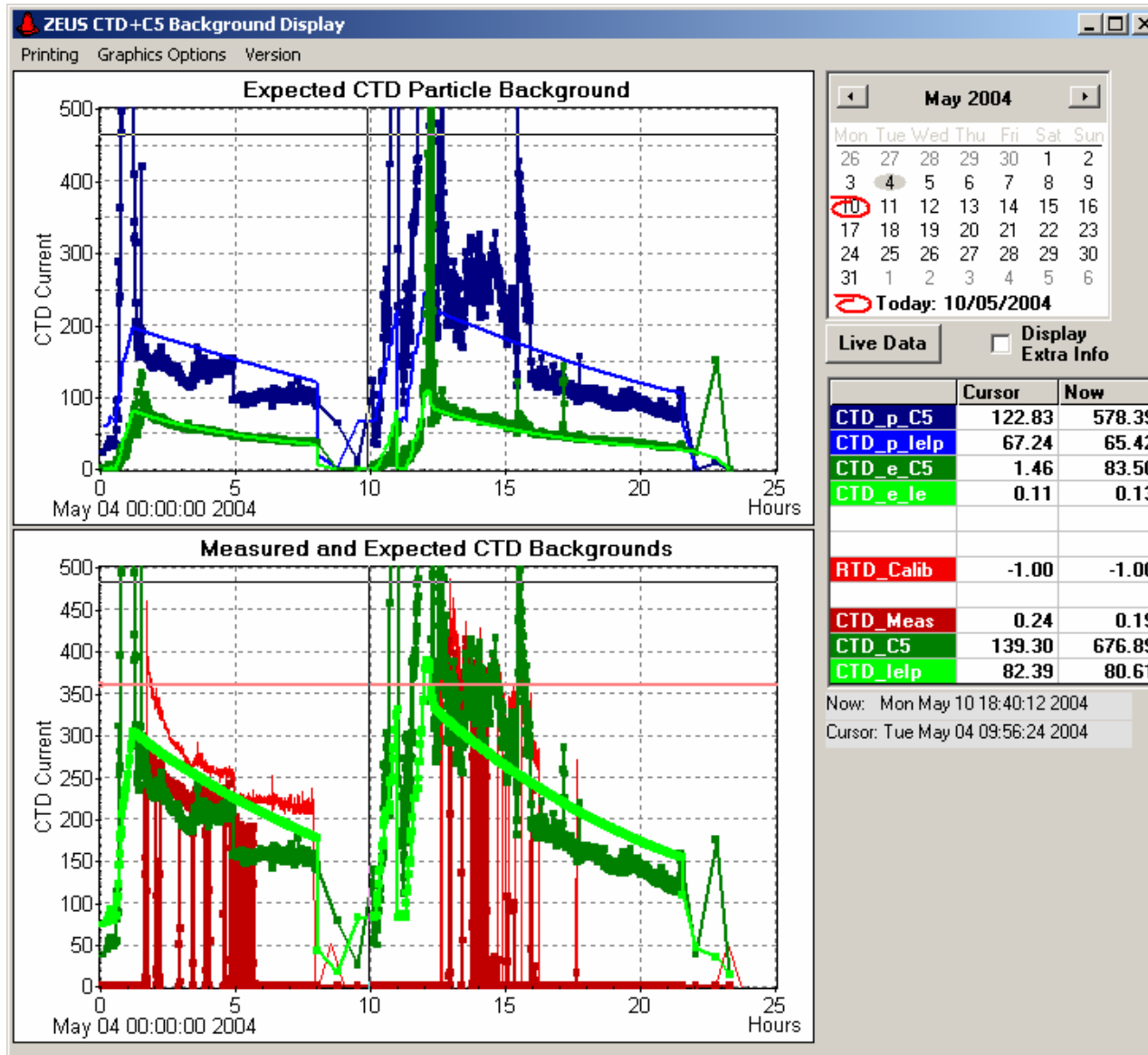


For large parts of the week data taking was not possible



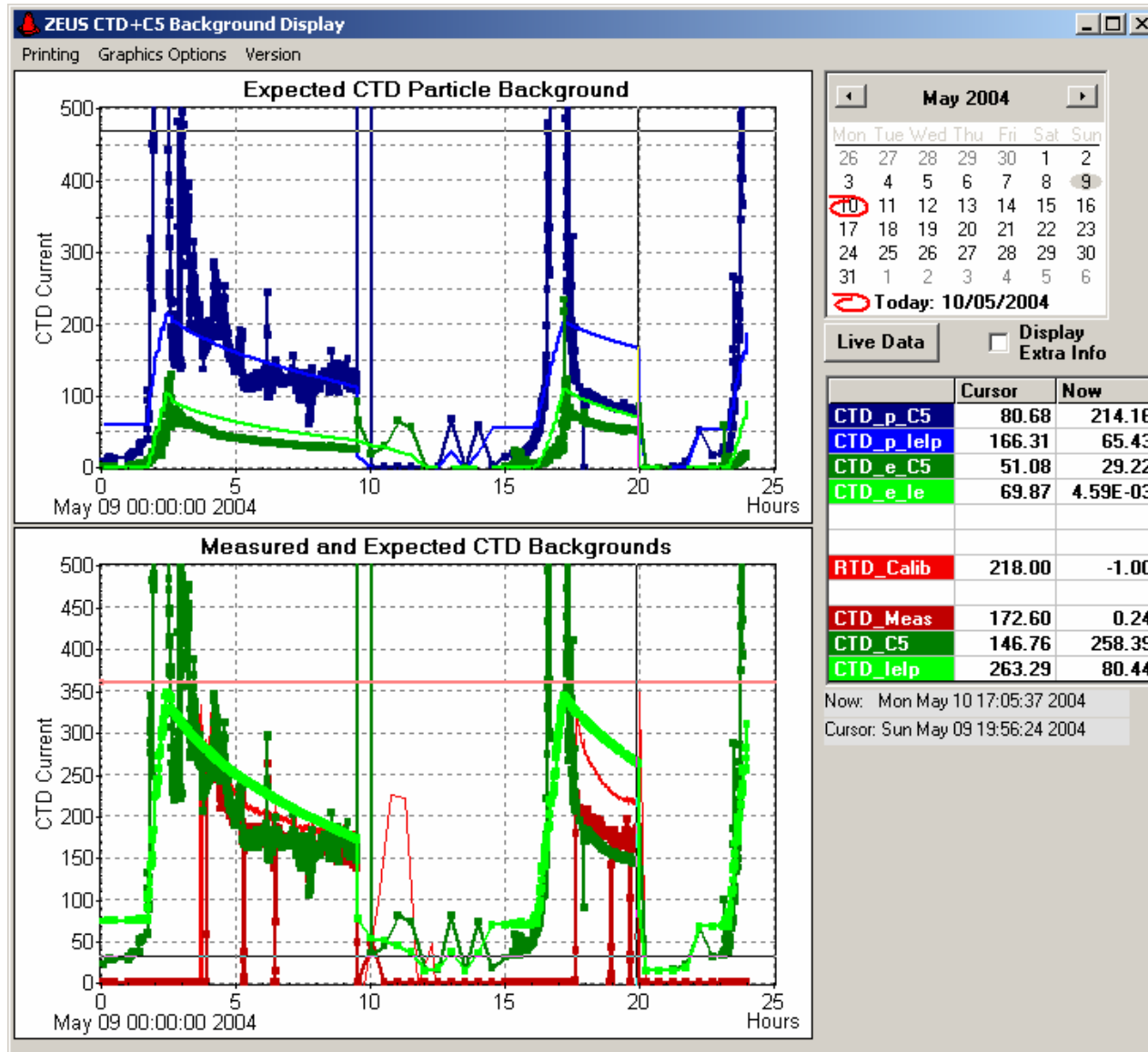
For large parts of the week data taking was not possible

Spikes, in particular after a few hours of running prevented switching on HV



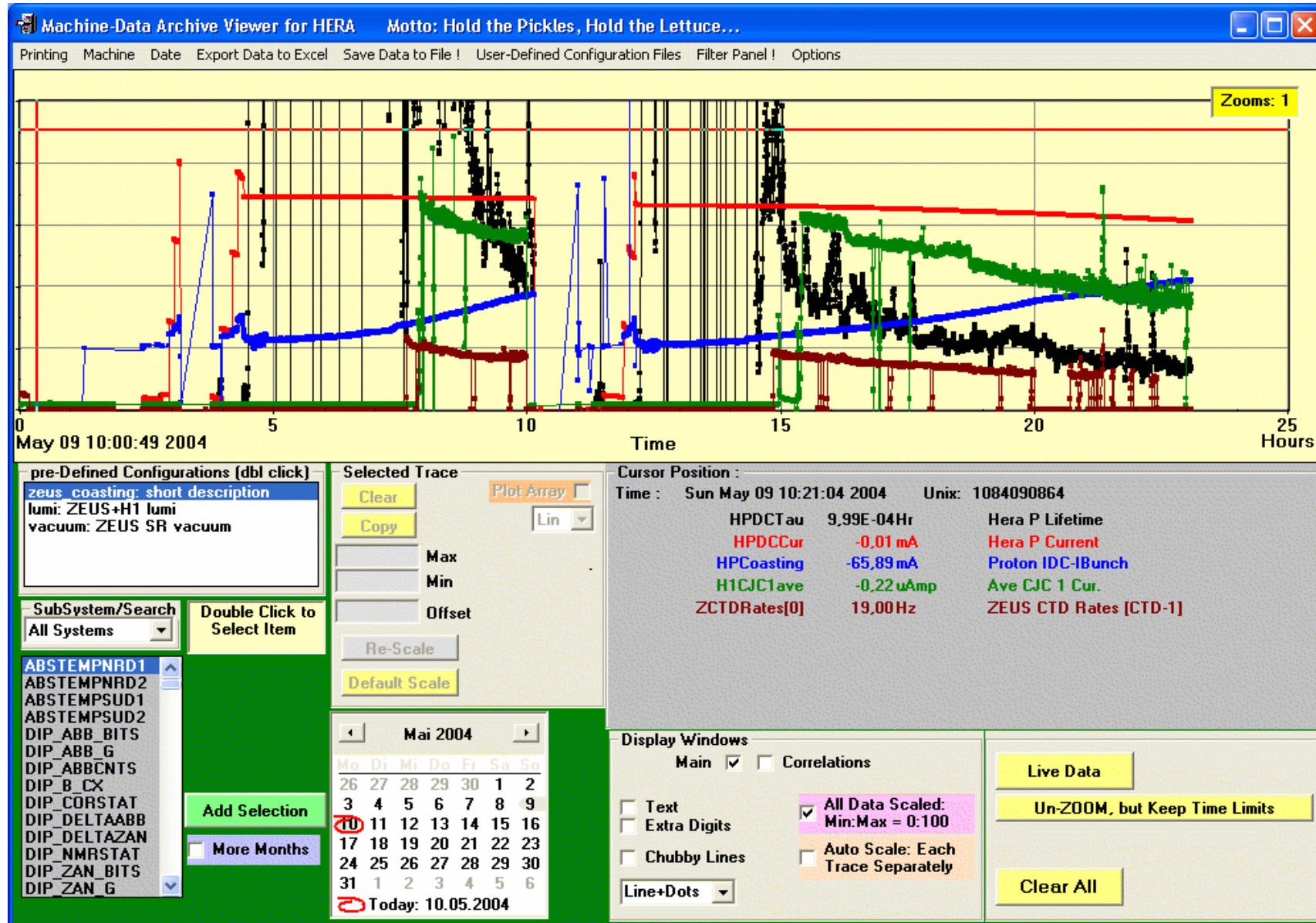
Mon – Mon:  
HERA delivered: 1.5 pb<sup>-1</sup>  
ZEUS gated: 0.6 pb<sup>-1</sup>

# Sunday May 9



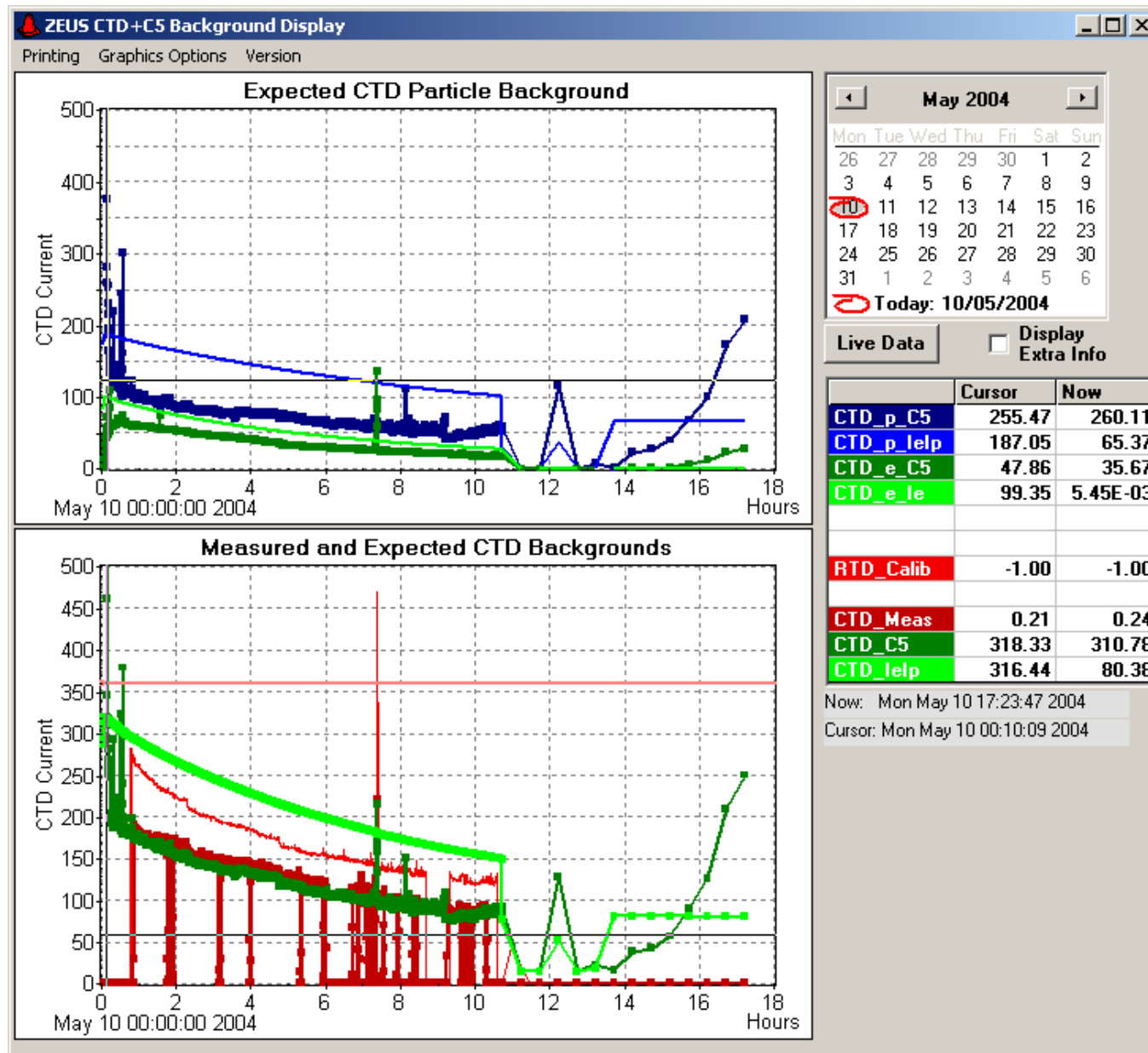
Sun.

Mon



Situation improved, but far from perfect

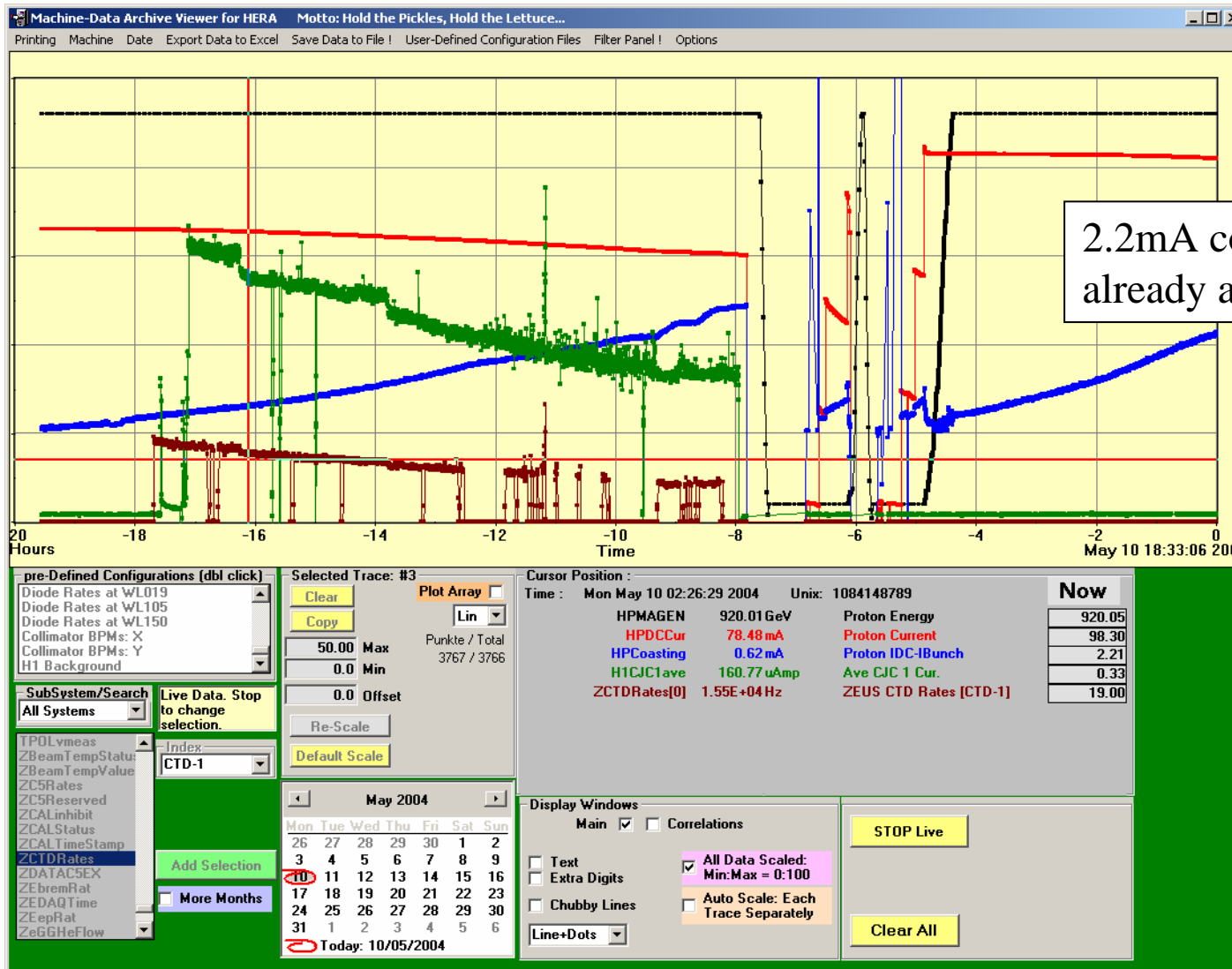
# Monday May 10 - morning



Baseline Background very low, but spikes after 7 hrs of running

p-lifetime is not very good

# Monday May 10 - afternoon



Something is still wrong....

Coasting beam development is not as steep as before,  
 but still clearly visible,  
 p-beam lifetime is still too short

