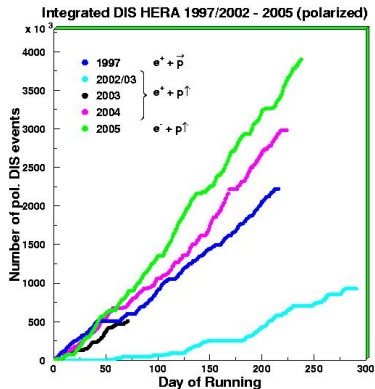
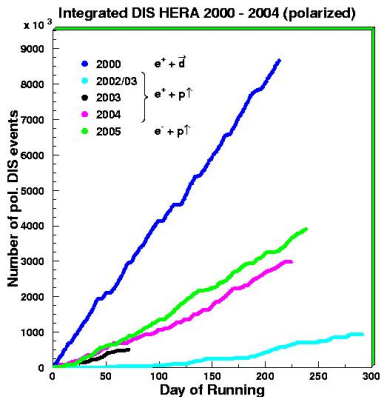


HERMES data taking



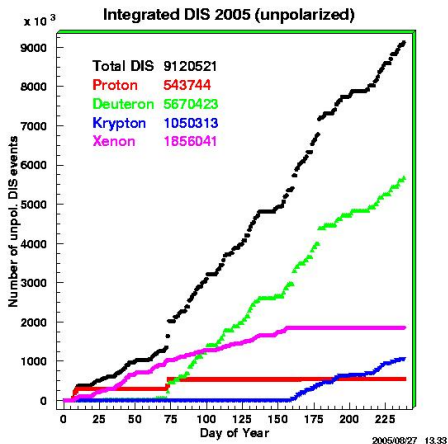
- about 3.8 Mill. DIS in 2005
- same efficiency as 97

HERMES data taking



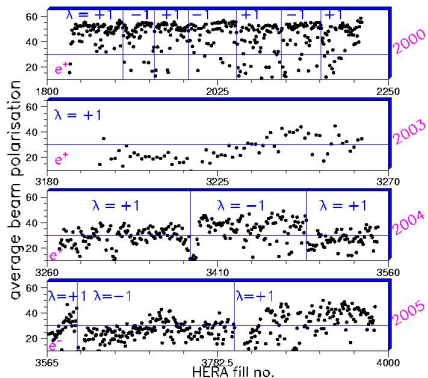
- about 3.8 Mill. DIS in 2005
- same efficiency as 97
- still short of efficiency in 2000

HERMES data taking



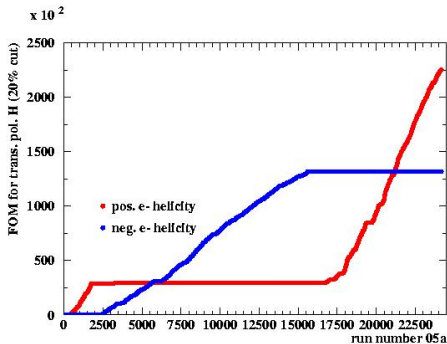
- about 3.8 Mill. DIS in 2005
- same efficiency as 97
- still short of efficiency in 2000
- unpolarized data taking ongoing
- switched from Xe to Kr
- Detector is in good shape
- cooling water problems gone

Beam polarization



- Polarization low
- asymmetric peak helicity (opposite to 2004)

Beam polarization



- Polarization low
- asymmetric peak helicity (opposite to 2004)
- FOM requires helicity change now
- since August 2nd LPOL/TPOL ratio low

Recoil Detector Test Experiment

- Full detector is running and taking cosmics data
- stable running of the electronics (weeks)
- DAQ ready for integration into HERMES
- cosmic data set allows for efficiency determination
 - for each strip in the PD
 - for each fiber in the SFT
 - for each sensor of the SiD
- dismantle test experiment beginning 5th of September
- ready for installation beginning of November

Shutdown 2005

- move some tasks to access days (Survey, etc.)
- Installation of the Recoil Detector
- RD-Installation requires full length of the shutdown
- Hermes moves to service position (BU in ER/SL)
- <http://www-gds.desy.de/zeitpl/zpl.htm>