

# CSRtrack Version 1.2

## User's Manual

M. Dohlus and T. Limberg

Contact:

[Martin.Dohlus@desy.de](mailto:Martin.Dohlus@desy.de) / [Torsten.Limberg@desy.de](mailto:Torsten.Limberg@desy.de)

# Table of Contents

1. Introduction and Code Improvements .....	3
1.1. Changes in Version 1.1:.....	3
1.2. Changes in Version 1.2:.....	3
2. First Steps to run CSRtrack on a WINDOWS XP Computer .....	4
2.1. Download, Installation and a First Run .....	4
2.2. The Example Input (File).....	5
2.3. Plotting Results.....	9
2.4. Calculation of the example with other models for the CSR fields ('forces').....	11
2.4.1. With Force Type p_to_p.....	11
2.4.2. With Force Type g_to_p.....	11
2.5. Typical CPU Time and File Structure for the Example.....	12
3. CSRtrack Command Structure .....	13
3.1. Command File .....	13
3.2. Sections.....	13
3.3. Global Commands .....	13
4. CSRtrack Sections .....	14
4.1. Section: io_path .....	14
4.2. Section: lattice .....	14
4.2.1. Definition of Field-Boundaries (Subsection: position).....	16
4.2.2. Branch Section: Dipole.....	17
4.2.3. Branch Section: quadrupole.....	18
4.2.4. Branch Section: multipole .....	18
4.3. Assignment Section: particles.....	20
4.4. Section: track_step .....	23
4.5. Section: tracker .....	28
4.6. Section: forces.....	30
4.6.1. Introduction to the Different CSR Models.....	31
4.6.2. Parameters for the projected Force .....	31
4.6.3. Parameters for the csr_p_to_p and csr_g_to_p Forces .....	33
4.6.4. Additional Parameters for the csr_p_to_m and csr_g_to_m Forces .....	34
4.6.5. Shielding.....	34
4.6.6. Setting Sub-bunch Sizes from File .....	35
4.6.7. Examples .....	36
4.7. Sections: monitor and online_monitor.....	36
4.7.1. online_monitor: type=phase .....	38
4.7.2. online_monitor: type = subbunch .....	41
4.7.3. online_monitor: type = steps.....	41
5. Appendix .....	42
5.1. CSRtrack Units .....	42
5.2. Results for Example Case.....	42
5.3. Example for Position Averaging Pulse Smoothing Technique.....	44
5.4. Fixed Bugs.....	45
6. Bibliography .....	45

# 1. Introduction and Code Improvements

The CSRtrack code tracks particle ensembles through beam lines with arbitrary geometry. The field calculation in CSRtrack offers different algorithms to choose from, from the fast ‘projected’ 1-D method to the most rigorous, the three-dimensional integration over 3D Gaussian sub-bunch distributions (see section ‘[forces](#)’).

The 3D field calculations take Coherent Synchrotron Radiation fields into account as well as intra-bunch fields, similar to the well-known space-charge fields on straight trajectories, but, on curved paths, not cleanly separable from radiative fields any longer.

Tracking is done in absolute coordinates through a magnet lattice defined by magnet field boundaries (see section ‘[lattice](#)’) using a self-consistent algorithm. CSRtrack handles dipole, quadrupole and multipole magnets.

RF sections are not implemented yet. Tracking through long straight RF sections is better left to codes like elegant or ASTRA, depending on the importance of space charge force.

## 1.1. Changes in Version 1.1:

New types of CSR field calculation methods:

- `csr_p_to_m`
- `csr_g_to_m`

(see section ‘[forces](#)’). The forces are calculated using meshed electromagnetic field values which is useful when tracking big numbers of particles since the cpu time scales linear (and not quadratically) with the number of particles.

## 1.2. Changes in Version 1.2:

- Current smoothing for ‘projected’ force with a Gauss filter and position averaging.
- Added the possibility for the force type ‘projected’ to introduce a user defined wake field to model for instance the resistive wake of a magnet chicane vacuum chamber.
- Bug fix for self-force of type projected (see appendix).

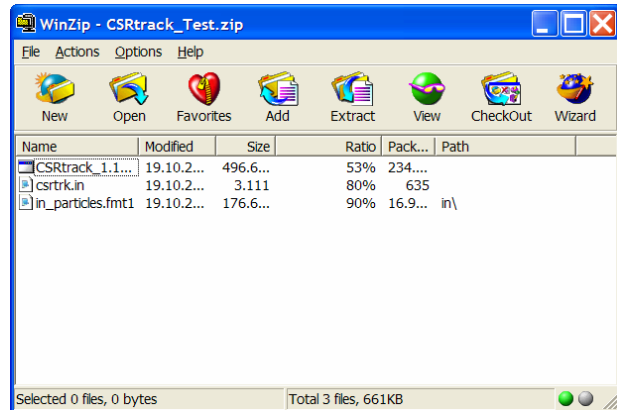
## 2. First Steps to run CSRtrack on a WINDOWS XP Computer

### 2.1. Download, Installation and a First Run

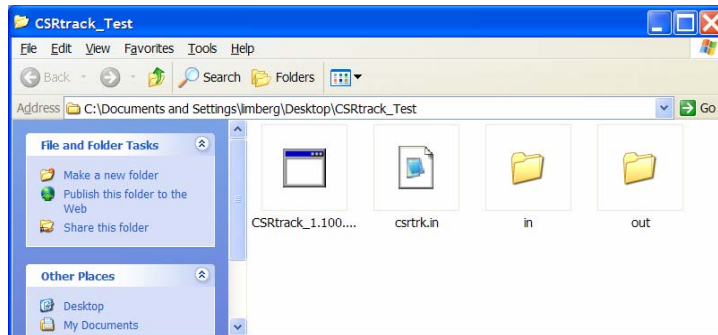
Download the file 'CSRtrack\_example1.zip' from

<http://www.desy.de/xfel-beam/csrtrack/index.html>

and open it. You should see the following window:



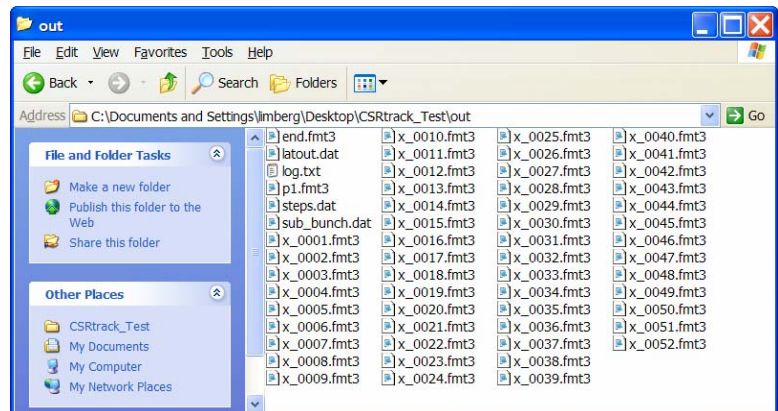
Extracting all files into a new folder (called 'CSRtrack\_Test' here) should lead to the following if you explore the folder:



The folder 'in' contains the particle distribution file 'in\_particles.fmt1' (see section 'particles'), the 'out' folder is empty. The CSRtrack executable expects to find a 'csrtrk.in' file in the same folder it is located. That file can be a complete description of the run or

it may refer to other input files (see '[Command File](#)').

Double-clicking the executable runs CSRtrack and the following files should appear in the 'out' folder:



Now you ran CSRtrack successfully for the first time. For a better understanding what you calculated and how the output is generated, let's look into the 'csrtrk.in' file.

## 2.2. The Example Input (File)

It starts with the specification of in- and output paths (see section [io\\_path](#)), starting the path in the folder where the executable is located.

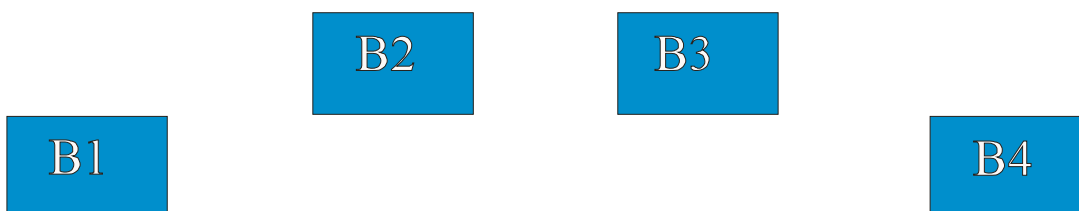
```
!-----  
io_path{input =in,output=out,logfile=log.txt}
```

So our folders 'in' and 'out' are specified as targets for in- and output.

Now the lattice is defined (see section '[lattice](#)')

```
!-----  
! 4 magnet bunch compressor  
!-----  
lattice{  
  dipole ! 1st dipole  
    {position{rho=0.0,psi=0.0,marker=d1a}  
     properties{r=-8.4}  
     position{rho=0.5,psi=0.0,marker=d1b}  
    }  
  dipole ! 2nd dipole  
    {position{rho=1.0,psi=0.0,marker=d2a}  
     properties{r=8.4}  
     position{rho=1.5,psi=0.0,marker=d2b}  
    }  
  dipole ! 3rd dipole  
    {position{rho=2.5,psi=0.0,marker=d3a}  
     properties{r=8.4}  
     position{rho=3.0,psi=0.0,marker=d3b}  
    }  
  dipole ! 4th dipole  
    {position{rho=3.5,psi=0.0,marker=d4a}  
     properties{r=-8.4}  
     position{rho=4.0,psi=0.0,marker=d4b}  
    }  
}
```

And describes a four dipole magnet chicane



with the following parameters:

<b>chicane</b>		
bend magnet length (projected)	0.5 m	
drift length,(proj.) B1->B2 and B3->B4	0.5 m	
drift length, B2->B3	0.5 m	
bend radius	8.4 m	
momentum compaction	6 mm	

The particles distribution to be tracked is specified next:

```
!-----
! particle distribution
!-----
particles{reference momentum =reference particle
          reference point x   =0.0
          reference point y   =0.0
          reference point phi =0.0
          format=fmt1,array=#file{name=in particles.fmt1}
        }
```

After some options to change the reference system, the distribution is referenced to the file we have already seen in the ‘in’ folder. The format is ‘fmt1’ in this case (see section [‘particles’](#)).

The example consists of a Gaussian particle distribution (~1000 particles). Beam parameters are:

<b>bunch</b>		
energy	511 MeV	
charge	0.833 nC	
bunch length (in)	80 $\mu$ m	
bunch length (out)	20 $\mu$ m	
peak current (out)	5 kA	
horizontal twiss parameters (in):		
normalized emittance	1 mm mrad	
alpha	2.2	
beta	10 m	
<b>particle distribution</b>		
number of particles	997	
number of slices	83	
particles per slice	12	

reference particle without charge		
sub-bunch length	5.3 $\mu\text{m}$	
sub-bunch width (horizontal)	33 $\mu\text{m}$	
sub-bunch width (vertical)	50 $\mu\text{m}$	

The output of CSRtrack is prompted by so-called monitors: ‘Online monitors’ write data to file during the tracking, ‘offline monitors’ save data at the beginning or the end (see [‘monitor’](#))

```
!-----
! online monitors
!-----
online_monitor{name=sub_bunch.dat,type=subbunch
               start_time_c0=now
               end_time_marker=d4b,end_time_shift_c0=2.0
               time_step_c0=all
               }
online_monitor{name=steps.dat,type=steps
               start_time_c0=now
               end_time_marker=d4b,end_time_shift_c0=2.0
               time_step_c0=all
               }
online_monitor{name=p1.fmt3,type=phase,format=fmt3,particle=1
               start_time_c0=now
               end_time_marker=d4b,end_time_shift_c0=1.0
               time_step_c0=all
               }
online_monitor{name=x.fmt3,type=phase,format=fmt3,particle=all
               start_time_c0=now
               end_time_marker=d4b,end_time_shift_c0=1.0
               time_step_c0=0.10
               }
!-----
```

where name specifies the file name(s) to write the data to, accordingly the files named ‘sub\_bunch.dat’ etc. appear in our ‘out’ folder. Details can be found in the section [‘monitor’](#); in the example above data describing sub-bunch length, time-step-width and the phase-space position of the reference particle along the beam-line are dumped in single files while the x\_n files contain the phase-space coordinates for all particles at positions 10 cm apart from start to end\_time\_marker+end\_time\_shift\_c0 [m].

The method to calculate CSR fields and the parameters of the sub-bunches are chosen in the [‘forces’](#) command:

```
! force definition
!-----
forces{type=projected
      sigma long= 5.3e-6
      }
!-----
```

In this example, the 1-D projected field calculation method is used with a longitudinal size of 5.3 $\mu$ m. See chapter '[forces](#)' for details and other field solvers.

Finally, the range for the tracking calculation and the numerical parameters for the self-consistent, iterative particle tracking are specified:

```
!-----  
! tracking  
!-----  
  track_step{precondition=yes  
             iterative=2  
             error_per_ct=0.001  
             error_weight_momentum=0.0  
  
             ct_step_min=0.02  
             ct_step_max=0.10  
             ct_step_first=0.10  
             increase_factor=1.5  
             arc_factor=0.3  
             duty_steps=yes  
             }  
  
  tracker{end_time_marker=d4b,end_time_shift_c0=1.00}
```

The '`track_step`' command specifies that iterative tracking will be performed until two iterations are done or the error criterion is reached. The parameter `ct_step_min` and the ones below control the step-width algorithm. For details see section '[track\\_step](#)'.

The '`tracker`' command tells the code to track to the marker '`d4b`', which is associated with the end of the last bend (see the lattice definition above) plus an additional time interval which corresponds to the reference particle traveling the length of 1 m with speed `c0` (`end_time_shift_c0=1.00`). For details see section '[tracker](#)'.

Finally, another monitor command writes the phase space at the end of the tracking to the file '`end.fmt3`':

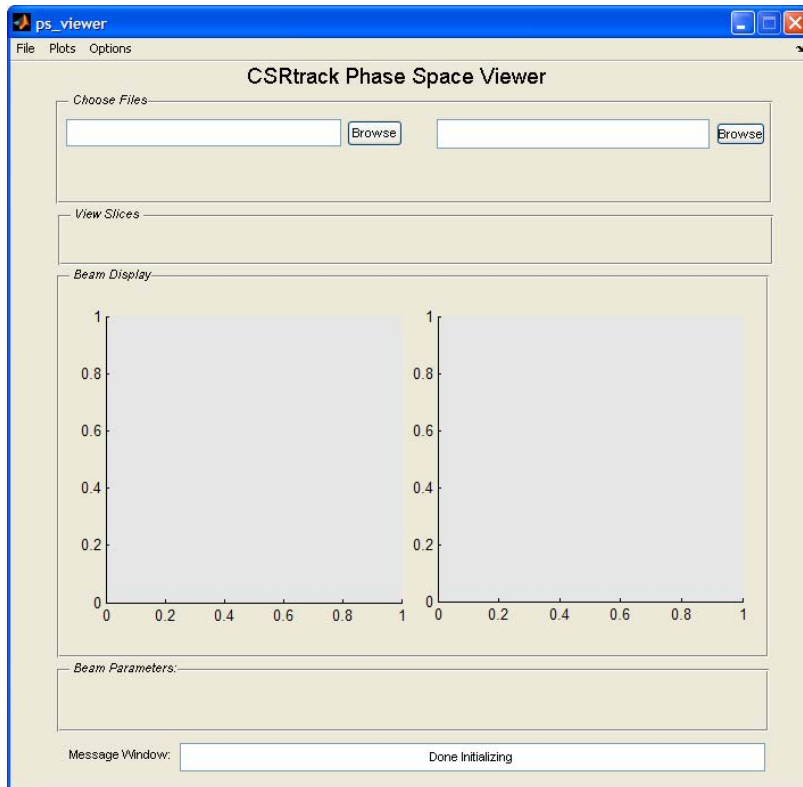
```
!-----  
! offline monitors  
!-----  
  monitor{format=fmt3,name=end.fmt3}
```

The calculation is started by running CSRtrack in the directory with the input file. The particle distribution is read from `in/particles_in.fmt1` and all output files are written to the directory `out`. This should create the same files as in the folder `out_solved`.

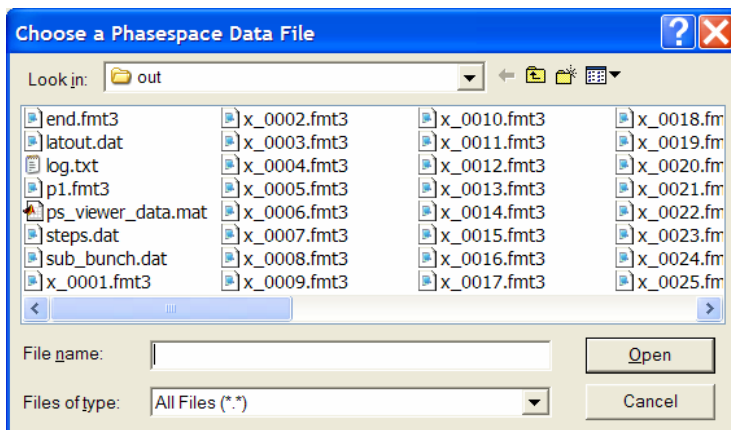


## 2.3. Plotting Results

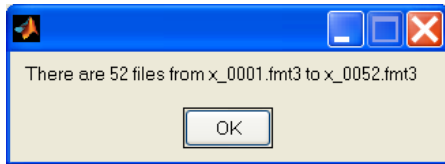
A MATLAB GUI called ‘CSRtrack\_ps\_viewer’ is available to plot CSRtrack results. Download the file ‘ps\_viewer.zip’ and extract the files in a folder ‘ps\_viewer’. Open MATLAB, choose that folder as working directory and enter ‘ps\_viewer’ on the MATLAB command line. You should see the following GUI:



Basically there are two axes to plot phase space projections for comparison. Use the ‘Browse’ button to open one of the result files you have in the ‘out’ folder in your CSRtrack\_test folder. The browse window should show the following files:

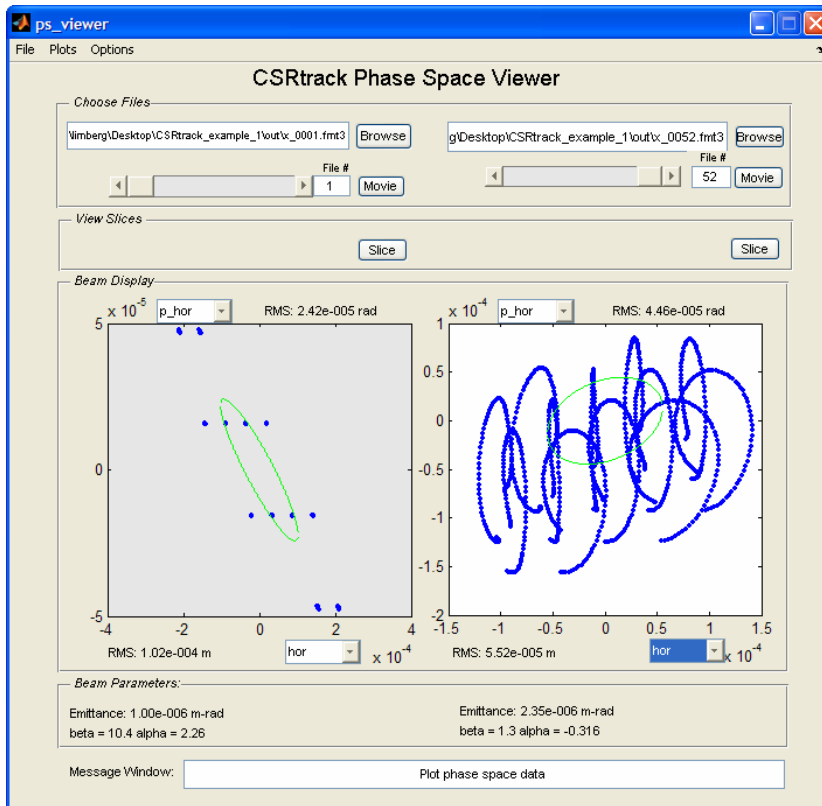


The ps\_viewer reads phase space distributions saved in the CSRtrack formats .fmt1 (like the input file) or .fmt3. Open the x\_0001.fmt3 file and the longitudinal phase space at this position will appear, after a message box



has informed you that there are 52 files along the beam line. A ‘Movie’ button pops up when there are more than 3 files of such type and you can push it to see a movie of how the longitudinal phase space evolves along the chicane.

Other phase space projections can be plotted by using the pull-down menus at the axis’ of the plot. The following shows the horizontal phase space at the beginning (right) and end (left) of the chicane (the slider or the editing field can be used to go back and forth between the different x\_nnnn files):



When ‘normal’ transverse phase space (like x-x’, here hor for horizontal and p\_hor for normalized horizontal momentum) is plotted, the emittance and the optics is calculated, else only the RMS values.

## 2.4. Calculation of the example with other models for the CSR fields ('forces')

### 2.4.1. With Force Type p\_to\_p

The command file is the same as for force type = **projected** with exception of the force definition:

```
!-----  
! force definition  
!-----  
forces{type=csr p to p,shape=ellipsoid  
    sigma long= 5.3e-6  
    sigma rad =33.0e-6  
    sigma vert=50.0e-6  
}
```

### 2.4.2. With Force Type g\_to\_p

The command file is the same as for force type = **projected** with exception of the force definition:

```
!-----  
! force definition  
!-----  
forces{type=csr g to p,shape=ellipsoid  
    sigma long= 5.3e-6  
    sigma rad =33.0e-6  
    sigma vert=50.0e-6  
}
```

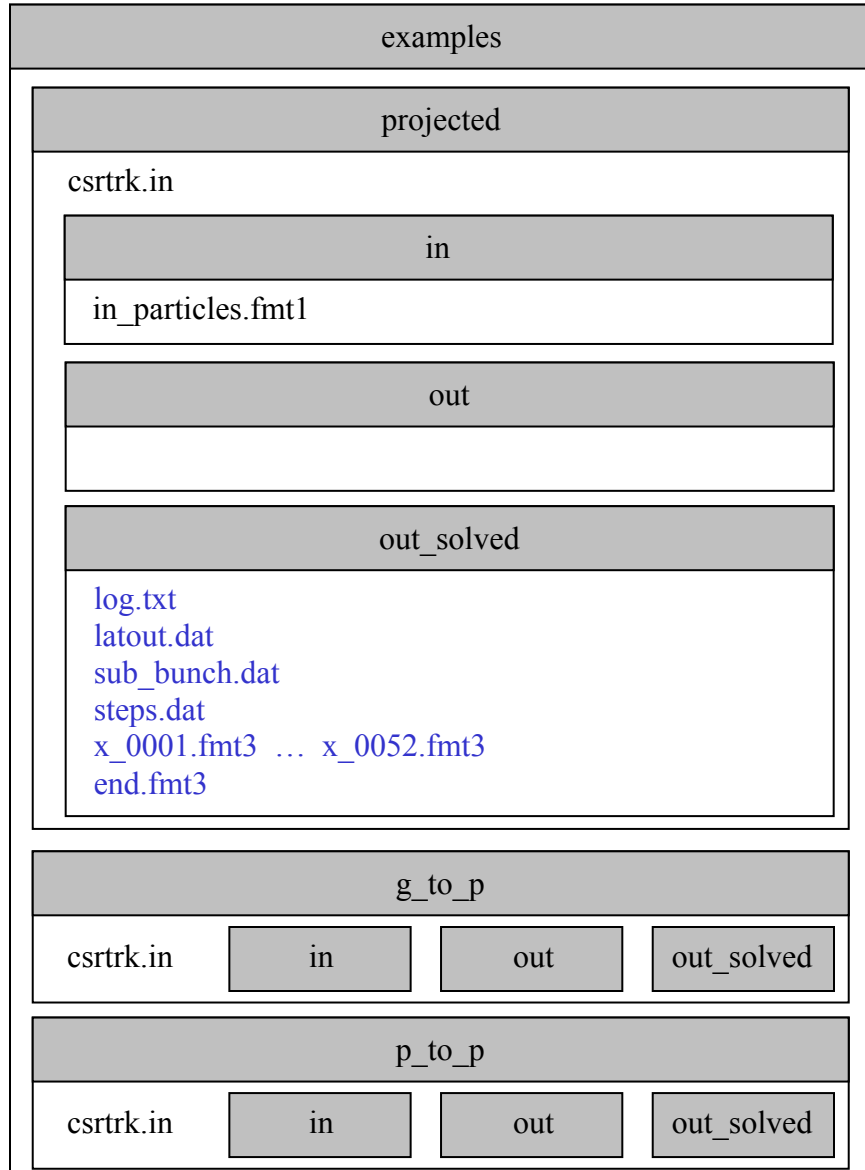
The dimensions of the sub-bunches are summarized in the following table.

Sub-Bunch Dimensions		
sub-bunch length	5.3 $\mu\text{m}$	
sub-bunch width (horizontal)	33 $\mu\text{m}$	
sub-bunch width (vertical)	50 $\mu\text{m}$	

Results for the calculations with the different force types are plotted in the appendix.

## 2.5. Typical CPU Time and File Structure for the Example

Calculation time (on a PC from 2004) for the **projected** method is less than 1 minute, for the **g\_to\_p** method 30 minutes and for the 'direct' **p\_to\_p** method 8.5 hours.



## 3. CSRtrack Command Structure

### 3.1. Command File

CSRtrack reads all commands from the ascii input file ‘csrtrk.in’. It has the following structure:

```
commands exit <CR>
```

with

```
commands = command [commands]  
command = comment / global_command / section  
comment = ! text <CR>  
separator = <blank> / , / <CR>
```

The input file can be used to specify and open further input files (see **#file**). The length of command lines in input files is limited to 400 characters.

### 3.2. Sections

```
section_name { section_body }
```

A section-call causes three activities:

- 1) The section is initialized after the opening bracket ‘{’,
- 2) Global commands and specific section commands are valid in the section body. Section specific commands are either assignment statements or nested sections. The assignment of section parameters can be done in any succession. The only exception is the particles definition (see section **particles**).
- 3) The section action is started after the closing bracket ‘}’.

### 3.3. Global Commands

There is only one global command in version 1.0:

```
global_command = #file{name = filename}  
filename = < name of nested input file >
```

The **#file** command opens a nested input file. The commands in this file are processed in the same way as that in the command file ‘csrtrk.in’. Maximal 10 nested files can be opened at once. Each nested file has to end with <CR>. After the processing of a nested file, CSRtrack continues processing of commands in files with higher level or of commands in ‘csrtrk.in’.

CSRtrack searches the input file *filename* either in the root directory (with ‘csrtrk.in’) or, if specified, in the input directory that is defined by the section **iopath**.

## 4. CSRtrack Sections

section name	
<b>io_path</b>	file io
<b>lattice</b>	lattice definition
<b>particles</b>	definition of particle distribution
<b>track_step</b>	Time grid, iterative tracking
<b>tracker</b>	tracking
<b>forces</b>	model for self forces
<b>monitor</b>	monitor
<b>online_monitor</b>	online monitor

### 4.1. Section: io\_path

The **io\_path** section is used to specify the input- and output-directories. If these directories are unspecified, input- and output-files are read from or written to the root directory (with 'csrtrk.in').

identifier	argument	unit / type
<b>input</b>	input directory	character string
<b>output</b>	output directory	character string
<b>logfile</b>	file name	character string

Example:

```
io path{input  =data/bc2/in,  
        output =data/bc2/out,  
        logfile=log.txt}
```

has the same effect as:

```
io path{logfile=log.txt,  
        input  =data/bc2/in,  
        output =data/bc2/out}
```

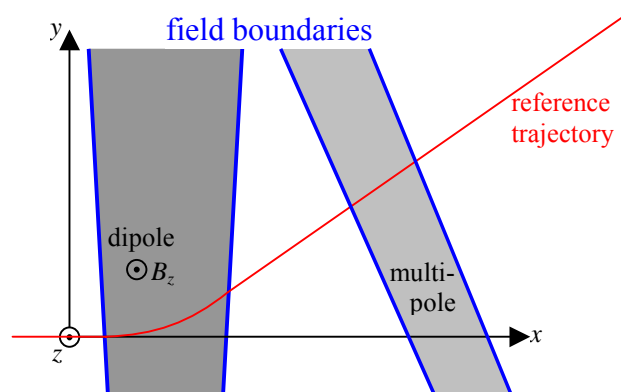
The logfile is written to 'data/bc2\_100/out/log.txt'.

### 4.2. Section: lattice

subsection name	
<b>dipole</b>	definition of dipoles

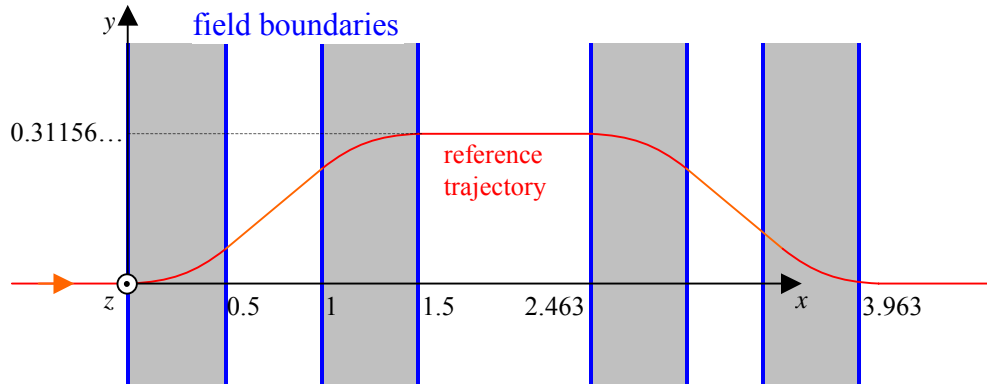
<b>quadrupole</b>	definition of quadrupoles
<b>multipole</b>	definition of multipoles

a) Concept: CSRtrack supports magnetic dipole- and multipole-fields that are defined in specified  $(x,y,z)$  coordinates. The range of these fields is defined by two **field-boundaries** that are perpendicular to the  $xy$ -plane. The dipole field between field boundaries is constant and parallel to the  $z$ -axis. Together with the dipoles a **reference trajectory** is defined that is composed by arcs and lines and lies in the  $xy$ -plane. The first part of the reference trajectory coincides with the  $x$ -axis. The definition of each lattice element has three parts: the definition of the first field-boundary, the definition of element properties and the definition of the second field boundary.



b) Example:

```
lattice{
  dipole ! 1st dipole
    {position{rho=0.0 ,psi=0.0,marker=d1a}
     properties{r=-1.66275}
     position{rho=0.5 ,psi=0.0,marker=d1b}
    }
  dipole ! 2nd dipole
    {position{rho=1.0 ,psi=0.0,marker=d2a}
     properties{r=1.66275}
     position{rho=1.5 ,psi=0.0,marker=d2b}
    }
  dipole ! 3rd dipole
    {position{rho=2.463,psi=0.0,marker=d3a}
     properties{r=1.66275}
     position{rho=2.963,psi=0.0,marker=d3b}
    }
  dipole ! 4th dipole
    {position{rho=3.463,psi=0.0,marker=d4a}
     properties{r=-1.66275}
     position{rho=3.963,psi=0.0,marker=d4b}
    }
}
```

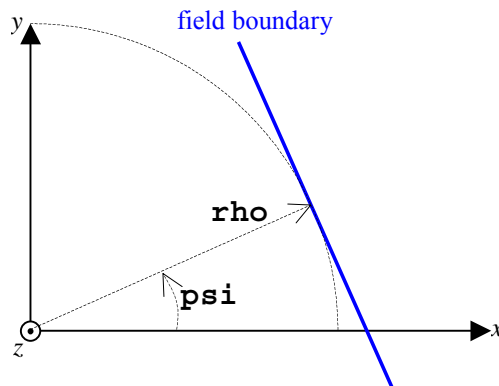


#### 4.2.1. Definition of Field-Boundaries (Subsection: position)

identifier	argument	unit / type
<b>rho</b>	value	length / number
<b>psi</b>	value	angle / number
<b>delta_s</b>	value	length / number
<b>delta_psi</b>	value	angle / number
<b>marker</b>	marker name	character string
<b>duty</b>	<b>yes / no</b>	

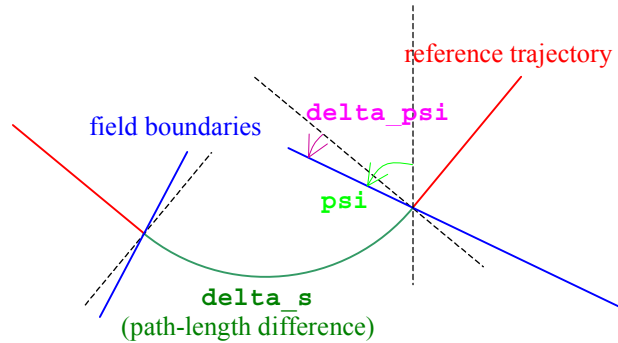
The position section is used to define field-boundaries. They can be defined absolute or relative.

a) Absolute definition of field boundaries: The field boundary is defined in polar coordinates by the parameters **rho** and **psi**. The definition of the first field boundary has to be absolute. The reference trajectory before the first field boundary is identical to the  $x$ -axis. The first reference point is the intersection of the first reference plane and the  $x$ -axis. The rest of the reference trajectory (and all later reference points) are recursively defined by dipoles and their curvature radii.





b) Relative definition of field boundaries: If the position and direction of the reference trajectory are defined for one field boundary, the position and direction of the intersection with the next field boundary is uniquely defined by the path-length difference **delta\_s** and the curvature radius **r** (if a dipole is bounded). The orientation of the field boundary is either specified by **psi** or **delta\_psi** or it is perpendicular to the reference trajectory. **Psi** defines the absolute orientation (in the same way as for the absolute definition) and **delta\_psi** defines the angle between field boundary and the plane perpendicular to the trajectory at the intersection point.



c) **marker**: The identifier **marker** is used to assign a name to a field boundary. The marker names can be used to specify time events eg. The instantaneous time when the reference particle (see particle definition) passes a field boundary. This identifier is optional, its argument is a character string.

d) **duty**: The identifier **duty** can be used to affect the step width control of the tracking algorithm (see **track\_step**). This identifier is optional, its argument is **yes** or **no**. If duty is not specified, it is set to **yes** for field boundaries of dipoles and to **no** for the rest.

e) Example

```
position{delta_s=0.2,marker=quad_in,duty=no}
```

#### 4.2.2. Branch Section: Dipole

subsection name	
<b>position</b>	definition of field boundaries
<b>properties</b>	dipole properties

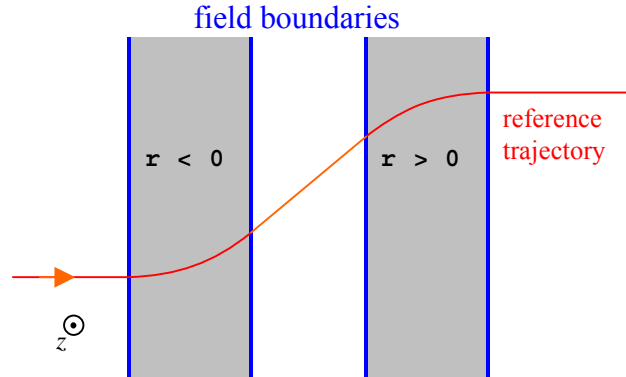
a) Subsection **position**: See 'Definition of Field Boundaries'.

b) Subsection **properties**:

identifiers	argument	unit / type
<b>r</b>	value	length / number

**r** sets the curvature radius of the reference trajectory. In combination with the reference momentum (see **particles**) the strength of the dipole field is uniquely determined. To take

into account vertical effects ( $z$ -direction) by edge `specific`, the tracking algorithm applies a vertical kick proportional to the offset from  $x$ - $y$ -plane at the field boundaries.



c) Example:

```
dipole ! 1st dipole
  {position{rho=0.0 ,psi=0.0,marker=d1a}
   properties{r=-1.66275}
   position{rho=0.5 ,psi=0.0,marker=d1b}
  }
```

#### 4.2.3. Branch Section: quadrupole

subsection name	
<b>position</b>	definition of field boundaries
<b>properties</b>	quadrupole properties

The definition of quadrupoles is identical to that of multipoles that is described in the next subsection. The only difference is the parameter `poles` that obsolete. Example:

```
quadrupole{ position{delta_s=0.2,marker=quad_in,duty=no}
  properties{strength=0.100,alpha=0
    horizontal_offset=0,vertical_offset=0}
  position{delta_s=0.5,marker=quad_out,duty=no}
}
```

#### 4.2.4. Branch Section: multipole

subsection name	
<b>position</b>	definition of field boundaries

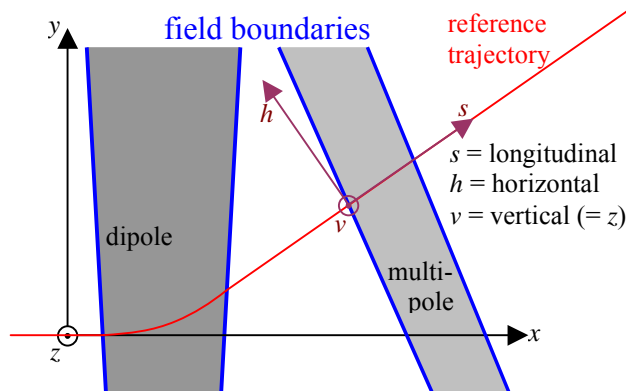
<b>properties</b>	multipole properties
-------------------	----------------------

a) Subsection **position**: See ‘Definition of Field Boundaries’.

b) Subsection **properties**:

identifier	argument	unit / type
<b>strength</b>	value ( $a$ )	length <sup>(-n)</sup> / number
<b>alpha</b>	value ( $\alpha$ )	angle / number
<b>horizontal_offset</b>	value ( $h_0$ )	length / number
<b>vertical_offset</b>	value ( $v_0$ )	length / number
<b>poles</b>	value ( $2n$ )	integer

The magnetic multipole field is defined in a local specified coordinate system ( $v,h,s$ ) with its origin in the intersection point of the reference trajectory and the field boundary:



The magnetic field between the field boundaries is independent on the longitudinal coordinate. In complex notation the horizontal and vertical components  $B_v$  and  $B_h$  of the field are:

$$B_v + jB_h = \frac{p_r}{q} \frac{a}{(n-1)!} \left( [h - h_0] + j[v - v_0] \right)^{n-1} e^{-jn\alpha}$$

with  $q$  the particle charge,  $p_r$  the reference momentum,  $n$  the azimuthal order,  $a$  the multipole strength,  $h_0$ ,  $v_0$  the horizontal and vertical offset and  $\alpha$  the skew angle. These parameters are related to the **properties** identifiers by:

$$\begin{aligned} \text{poles} &= 2n && (= 4 \text{ for quadrupoles}) \\ \text{strength} &= a \\ \text{horizontal\_offset} &= h_0 \\ \text{vertical\_offset} &= v_0 \\ \text{alpha} &= \alpha \end{aligned}$$

The parameters **horizontal\_offset**, **vertical\_offset** and **alpha** need not to be specified. Their default is zero.

c) Example:

```

multipole{ position{delta_s=0.2,marker=quad_in,duty=no}
           properties{poles=4
                      strength=0.100,alpha=0
                      horizontal_offset=0,vertical_offset=0}
           position{delta_s=0.5,marker=quad_out,duty=no}
        }

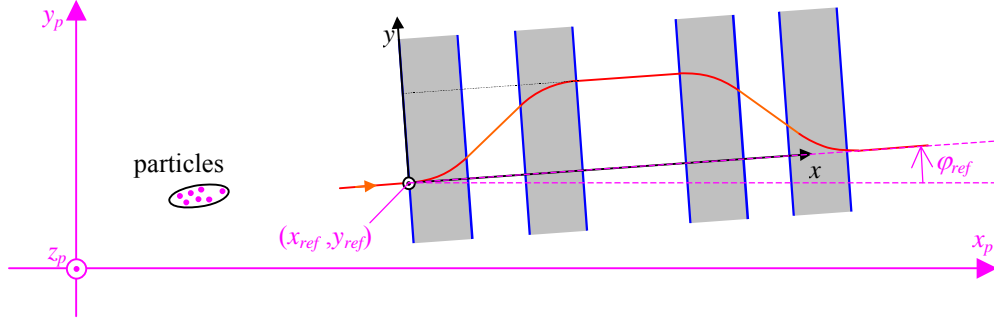
```

### 4.3. Assignment Section: particles

identifier	argument	unit / type
<b>format</b>	<b>fmt1 / fmt2 / astra</b>	
<b>reference_momentum</b>	value ( $p_r$ ) / <b>reference_particle /</b> <b>average</b>	momentum / number
<b>reference_point_x</b>	value ( $x_{ref}$ )	length / number
<b>reference_point_y</b>	value ( $y_{ref}$ )	length / number
<b>reference_point_phi</b>	value ( $\varphi$ )	angle / number
<b>array</b>		

a) Concept: The **particles** section is used to define the position, momentum and charge of a particle distribution in a absolute  $\square$ pecified coordinate system  $(x_p, y_p, z_p)$ . The first particle of this distribution is called **reference particle**. The reference particle is treated as all other particles, but some input and output parameters are defined relative to the reference particle. Eg. A time event may be defined by the transition of the reference particle through a field boundary, or the coordinates and momenta of other particles are given as increment to that of the reference particle. The **reference momentum** relates the **lattice** settings to absolute field strengths. (The reference momentum is not necessarily the momentum of the reference particle.) The properties of the particle distribution as well as the absolute time are defined in an array that is assigned to **array**. This assignment is terminated by the closing bracket of the section. Therefore **array** has to be the last assignment.

b)  $(x_p, y_p, z_p)$ -coordinates: The  $(x_p, y_p, z_p)$  coordinate system of the particle definition is related to the coordinate system of the lattice definition by:



$$\begin{aligned}
 x &= (x_p - x_{ref}) \cos \varphi + (y_p - y_{ref}) \sin \varphi \\
 y &= (x_{ref} - x_p) \sin \varphi + (y_p - y_{ref}) \cos \varphi \\
 z &= z_p
 \end{aligned}$$

c) **reference\_momentum**: The reference momentum is used to relate the curvature radii and strengths settings (**r**, **strength**) in **lattice** to magnetic field strengths:

$$\text{reference\_momentum} = \text{value}(p_r) / \text{reference\_particle} / \text{average}$$

Either the reference momentum is specified directly by value, or it is set to the momentum of the reference particle or to the average momentum of all particles.

d) **format** and **array**: Three different input formats are available to define particle distributions:

#### Format 1:

$$\begin{array}{l}
 \text{format} = \text{fmt1} \\
 \text{array} = t \quad r_1 \quad r_2 \quad r_3 \quad r_4 \quad r_5 \quad r_6 \\
 \quad x_r \quad y_r \quad z_r \quad px_r \quad py_r \quad pz_r \quad q_1 \\
 \quad \delta x_2 \quad \delta y_2 \quad \delta z_2 \quad \delta px_2 \quad \delta py_2 \quad \delta pz_2 \quad q_2 \\
 \quad \delta x_3 \quad \delta y_3 \quad \delta z_3 \quad \delta px_3 \quad \delta py_3 \quad \delta pz_3 \quad q_3 \\
 \quad \dots \\
 \quad \delta x_n \quad \delta y_n \quad \delta z_n \quad \delta px_n \quad \delta py_n \quad \delta pz_n \quad q_n
 \end{array}$$

The arguments of the **array** command are processed in the same way as the rest of the command file. Therefore the input can be directed to an other input file by the global command

$$\#file\{\text{name} = \text{filename}\}$$

and comments as well as all CSRtrack separators are valid. The end of the argument list is defined by the closing bracket of the **particles** section. In format 1 CSRtrack expects 7(N+1) numerical arguments. The first number *t* defines the time of the distribution. The next six values (*r*<sub>1</sub>, *r*<sub>2</sub>, *r*<sub>3</sub>, *r*<sub>4</sub>, *r*<sub>5</sub>, *r*<sub>6</sub>) have no meaning and do not affect the result of the calculation. The

triplets  $(x_r, y_r, z_r)$ ,  $(px_r, py_r, pz_r)$  define the position and momentum of the reference particle in  $(x_p, y_p, z_p)$ -coordinates.  $Q_1$  is the charge of the reference particle. Each further particle is defined by an additional set of numbers  $(\delta x_i, \delta y_i, \delta z_i, \delta px_i, \delta py_i, \delta pz_i, q_i)$  with the position  $(x_r + \delta x_i, y_r + \delta y_i, z_r + \delta z_i)$ , the momentum  $(px_r + \delta px_i, py_r + \delta py_i, pz_r + \delta pz_i)$  and the charge  $q_i$ .

### Format 2:

```

format = fmt2
array  = t      r1   r2   r3   r4   r5   r6
          xr  yr  zr  pxr  pyr  pzr  q1
          δs2 δh2 δv2 δps2 δph2 δpv2 q2
          δs3 δh3 δv3 δps3 δph3 δpv3 q3
          ...
          δsn δhn δvn δpsn δphn δpvn qn

```

The structure of format 2 is the same as for format 1. Position and momentum of the reference particle are defined as before. For all other particles the position- and momentum-differences to the reference particle are given in  $(s, h, v)$  coordinates. The direction of the  $s$ -axis is defined by the direction of the reference particle. The orthogonal  $h$ - and  $v$ -directions follow from:

$$\mathbf{u}_s = \mathbf{p}_{reference\_particle} / p_{reference\_particle}$$

$$\mathbf{u}_h = \mathbf{u}_z \times \mathbf{u}_s$$

$$\mathbf{u}_v = \mathbf{u}_s \times \mathbf{u}_h$$

$$\mathbf{r}_i = \mathbf{r}_{ref} + \delta s_i \mathbf{u}_s + \delta h_i \mathbf{u}_h + \delta v_i \mathbf{u}_v$$

$$\mathbf{p}_i = \mathbf{p}_{ref} + \delta ps_i \mathbf{u}_s + \delta ph_i \mathbf{u}_h + \delta pv_i \mathbf{u}_v$$

### Astra-Format:

```
format = astra
```

Astra coordinates are converted to CSRtrack coordinates by the permutation:  $(z, x, y)_{Astra} \rightarrow (x_p, y_p, z_p)$ .

e) Example:

```

particles{reference momentum =reference particle
          reference point x   =0.0
          reference_point_y   =0.0

```

```

reference point phi =0.0
format=fmt1,array=#file{name=particles bc2.fmt1}
}

```

#### 4.4. Section: track\_step

identifier	argument	unit / type
<b>precondition</b>	<b>yes / no</b>	
<b>iterative</b>	value ( <i>it</i> )	integer $\geq 1$
<b>error_per_ct</b>	value ( <i>err</i> )	time <sup>-1</sup> / number $> 0$
<b>error_weight_momentum</b>	value ( <i>w<sub>mom</sub></i> )	number $\geq 0$
<b>ct_step_min</b>	value ( <i>t<sub>min</sub></i> )	time / number $\geq 0$
<b>ct_step_max</b>	value ( <i>t<sub>max</sub></i> )	time / number $\geq 0$
<b>ct_step_first</b>	value ( <i>t<sub>first</sub></i> )	time / number $\geq 0$
<b>duty_steps</b>	<b>yes / no</b>	
<b>increase_factor</b>	value ( <i>inc</i> )	number $\geq 1$
<b>arc_factor</b>	value ( <i>arc</i> )	number $\geq 1$
<b>time_grid_file</b>	file name	character string
<b>steps_tolerance</b>	value ( <i>tol</i> )	time / number $> 0$

a) Concept: CSRtrack calculates self-forces on a [time grid](#) and interpolates them linearly for particle tracking. The section **track\_step** is used to control the time grid as well as the tracking from one grid point to the next. There are two possibilities to determine the time grid or the widths of time steps: either an external file defines the grid directly or the step widths are set recursively. For a new force calculation the phase space coordinates all particles have to be known, but they depend on the force that has to be determined. This implicit problem is solved recursively ([iterative tracking](#)). The time steps and the parameters for iterative tracking are crucial for the accuracy of the calculation. The **track\_step** settings can be redefined eg. Before a consecutive call of the **tracker** section.

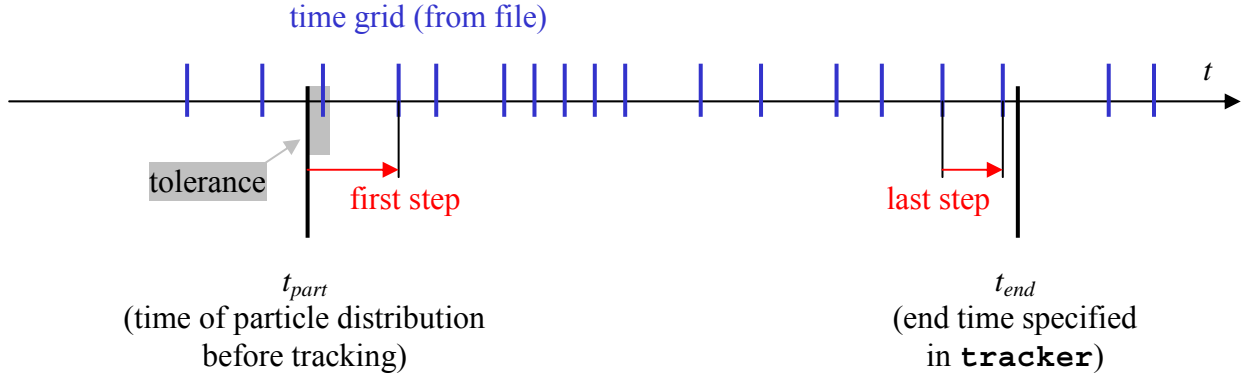
b) **time\_grid\_file**: The time grid can be defined directly by the uses of a file with time grid values. The filename and a tolerance parameter are set by the following commands:

```

time_grid_file = file name
steps_tolerance = value (tol)

```

CSRtrack expects an ascii input file with the specified name in the input- or root-directory (see [io\\_path](#)). It reads a list of time grid values, one value per input line with the time unit (1 m /  $c_0$ ).



4

CSRtrack processes time grid values between the actual time associated to the particle distribution ( $t_{part}$ ) to the end time ( $t_{end}$ ) that is defined in the section **tracker**. Time grid values are ignored if they need steps smaller than the tolerance parameter. The tolerance parameter (*tol*) is used to avoid a first step of zero length or to avoid extremely small steps.

For the preparation of the time grid, the user has to take care about the position of the particles distribution in the lattice. The steps-monitor (see **online\_monitor**, **type=steps**) can be used to support this task. E.g. a new time grid can be derived from an old one that was generated by a calculation with recursive step widths control.

c) Recursive calculation of time steps: The automatic time stepping is active if no time grid file is specified. It is controlled by the parameters

```

ct_step_max      =  $t_{max}$ 
ct_step_min      =  $t_{min}$ 
ct_step_first    =  $t_{first}$ 
duty_steps       = yes / no
increase_factor  =  $f_{inc}$ 
arc_factor       =  $f_{arc}$ 

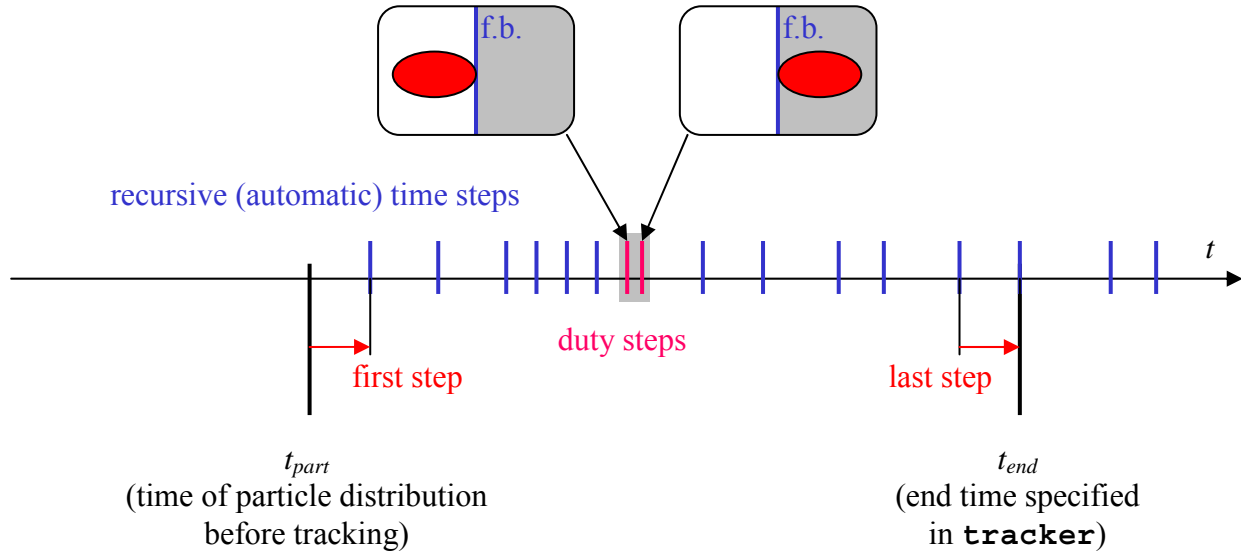
```

If **duty\_steps** is set to ‘no’ or if no field boundary is passed during the track step CSRtrack uses time steps longer or equal  $t_{min}$ . The maximal time step is limited by  $\min(t_{min}, t_{arc})$  with  $t_{arc} = f_{arc} \sqrt[3]{24R_c \sigma_{rms}}$  with  $R_c$  the actual curvature radius of the trajectory and  $\sigma_{rms}$  the (actual) rms length of the particle distribution. It starts with a step of the length  $t_{first}$  and increases it for each new step by the factor  $f_{arc}$  until it is limited by  $\min(t_{min}, t_{arc})$ .

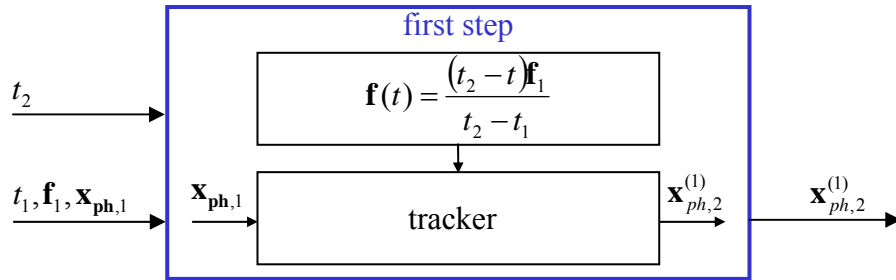
The time dependency of forces is usually slowly compared to the bunch length. Transition processes are typically of the order of the formation time  $c^{-1} \cdot \sqrt[3]{24R_c \sigma_{rms}}$ . This is different if the bunch shape or the curvature radius change rapidly. The **duty\_steps** command is used to consider fast transient processes (especially of radial forces) at field boundaries. CSRtrack uses extra grid points for the transition of field boundaries if **duty\_steps** is set to ‘yes’. At these points the complete particle distribution is either directly before or directly after a field boundary. (Duty steps at a particular field boundary can be disabled by the **duty** command in the **position** section.) The recursive step algorithm is forward looking: it uses steps that are

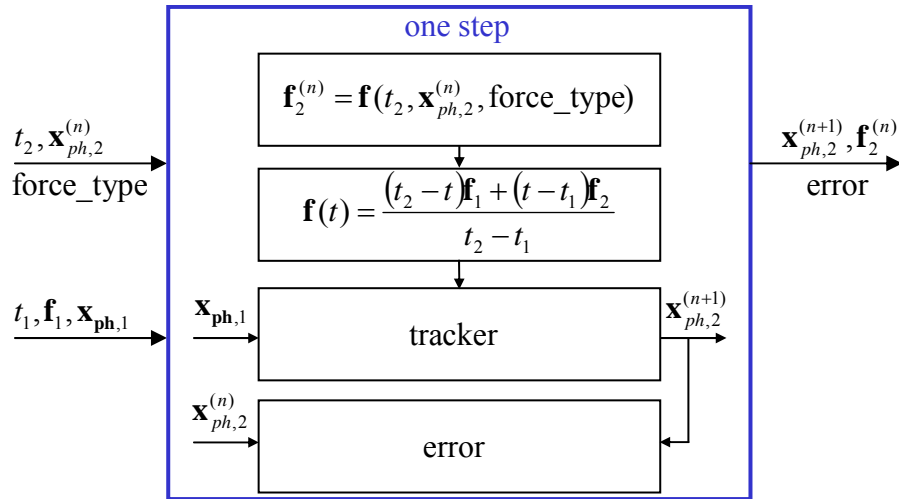


shorter than allowed if this helps to avoid a very short step before the end point (defined in section **tracker**) or a duty point.

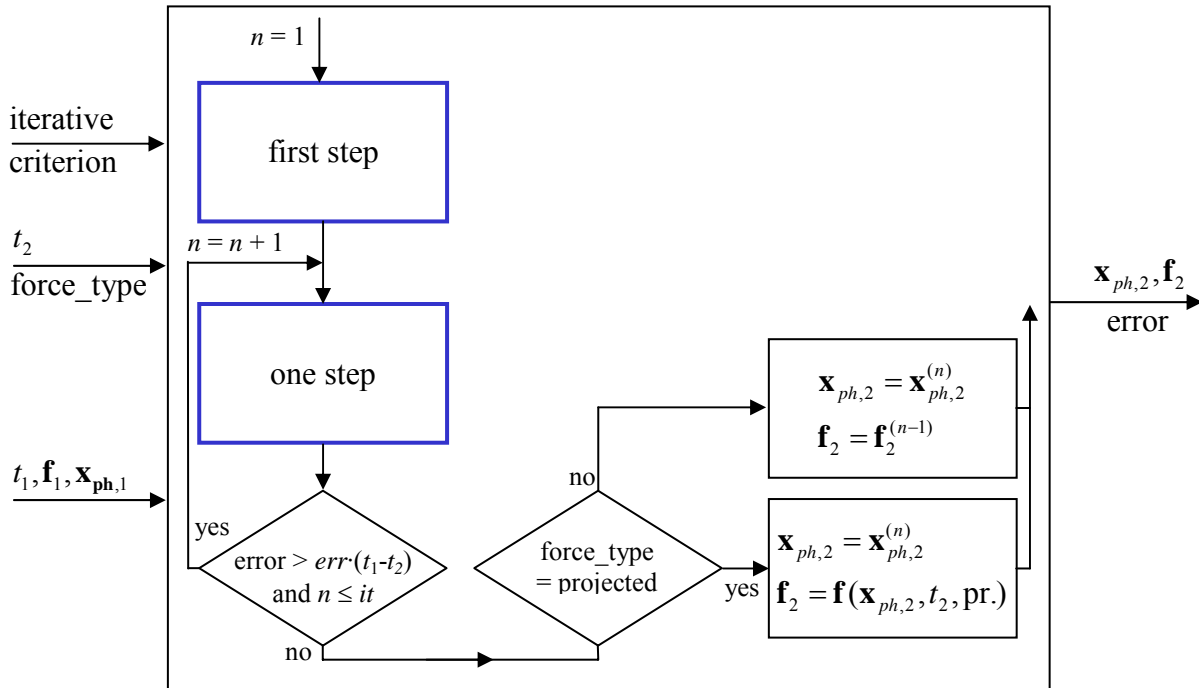


d) Iterative tracking: To integrate the equation of motion from on grid point ( $t_1$ ) to the next ( $t_2$ ) CSRtrack needs the self forces  $\mathbf{f}(t)$  to all particles in the complete time interval  $t_1 \leq t \leq t_2$ . They are approximated by a linear interpolation between  $\mathbf{f}_1 = \mathbf{f}(t_1)$  and  $\mathbf{f}_2 = \mathbf{f}(t_2)$ . As  $\mathbf{f}_2$  depends on unknown phase space coordinates  $\mathbf{x}_{ph,2} = \mathbf{x}_{ph}(t_2)$  they are estimated by  $\mathbf{x}_{ph,2}^{(n)}$  and are improved to  $\mathbf{x}_{ph,2}^{(n+1)}$  by iterative tracking. The first estimation  $\mathbf{x}_{ph,2}^{(1)}$  is calculated with force  $\mathbf{f}_2^{(0)} = \mathbf{0}$ .





CSRtrack repeats the iterative tracking until the error criterion (set by **error\_per\_ct**) is fulfilled or the maximal number of iterations (set by **iterative**) is reached.



As the field computation for **force\_type = projected** is very efficient, CSRtrack calculates  $\mathbf{x}_{ph,2} = \mathbf{x}_{ph,2}^{(n)}$ ,  $\mathbf{f}_2 = \mathbf{f}(t_2, \mathbf{x}_{ph,2}^{(n)}, \text{projected})$  for this type and uses  $\mathbf{x}_{ph,2} = \mathbf{x}_{ph,2}^{(n)}$ ,  $\mathbf{f}_2 = \mathbf{f}(t_2, \mathbf{x}_{ph,2}^{(n-1)}, \dots)$  otherwise. (The **force\_type** is set by the command **type** in the **forces** section.)

e) Iterative tracking with precondition: The **forces** section provides several models for the calculation of self forces, e.g. **type = projected / csr\_p\_to\_p / csr\_g\_to\_p**. As the 'projected' model needs much less numerical effort than the other models, it could be helpful to use phase space coordinates  $\mathbf{x}_{ph,2}$  that have been computed by iterative tracking with this

method to improve the start estimation for other methods. This option is activated or deactivated by the command

```
precondition = yes / no
```

f) Error criterion: The accuracy parameter is set by the command

```
error_per_ct = err  
error_weight_momentum = w_mom
```

The (relative) error criterion is

$$error(\mathbf{x}_{ph,2}^{(n)}, \mathbf{x}_{ph,2}^{(n+1)}) < (t_2 - t_1) \cdot err$$

$$error(\mathbf{x}_{ph,2}^{(n)}, \mathbf{x}_{ph,2}^{(n+1)}) = \sqrt{\frac{\langle (s^{(n+1)} - s^{(n)})^2 \rangle}{\langle (s^{(n+1)} - \langle s^{(n+1)} \rangle)^2 \rangle} + \frac{\langle (h^{(n+1)} - h^{(n)})^2 \rangle}{\langle (h^{(n+1)} - \langle h^{(n+1)} \rangle)^2 \rangle}} + w_{mom} \sqrt{\frac{\langle (p_s^{(n+1)} - p_s^{(n)})^2 \rangle}{\langle (p_s^{(n+1)} - \langle p_s^{(n+1)} \rangle)^2 \rangle}}$$

with  $s$ ,  $h$  and  $p_s$  the longitudinal-, horizontal- and momentum offset of all particles with respect to the reference particle. The operator  $\langle x \rangle$  averages phase space coordinates without weighting by particle charges.

g) Example:

```
track_step{ct_step_min=0.02  
ct_step_max=0.20  
ct_step_first=0.20  
increase_factor=2.0  
arc_factor=0.3  
duty_steps=yes  
  
iterative=2  
error_per_ct=0.001  
error_weight_momentum=0.1  
precondition=yes  
}
```

The sum of the relative errors of all track steps from  $t_{part}$  (start time) to  $t_{end}$  is below  $err \cdot (t_{end} - t_{part})$ . For a chicane with a path length of about 5m the simulated time interval will be similar ( $\cong 5$  m/c) . Therefore the sum of relative errors is below 0.005 for  $err = 0.001$ . Note that the parameter  $err$  controls errors due to iterative tracking and not the error related to the quality of the time grid.

## 4.5. Section: tracker

identifier	argument	unit / type
<code>end_time_c0</code>	value ( $t_{end}$ )	time / number
<code>delta_time_c0</code>	value ( $dt_{end}$ )	time / number
<code>end_time_marker</code>	marker name	character string
<code>end_time_shift_c0</code>	value ( $t_{shift}$ )	time / number

The particle tracking is activated by the **tracker** section. There are three possibilities to define the time end ( $t_{end}$ ) of the calculation: either directly by the command

$$\text{end\_time\_c0} = t_{end}$$

or incremental by

$$\text{delta\_time\_c0} = dt_{end} = t_{end} - t_{part}$$

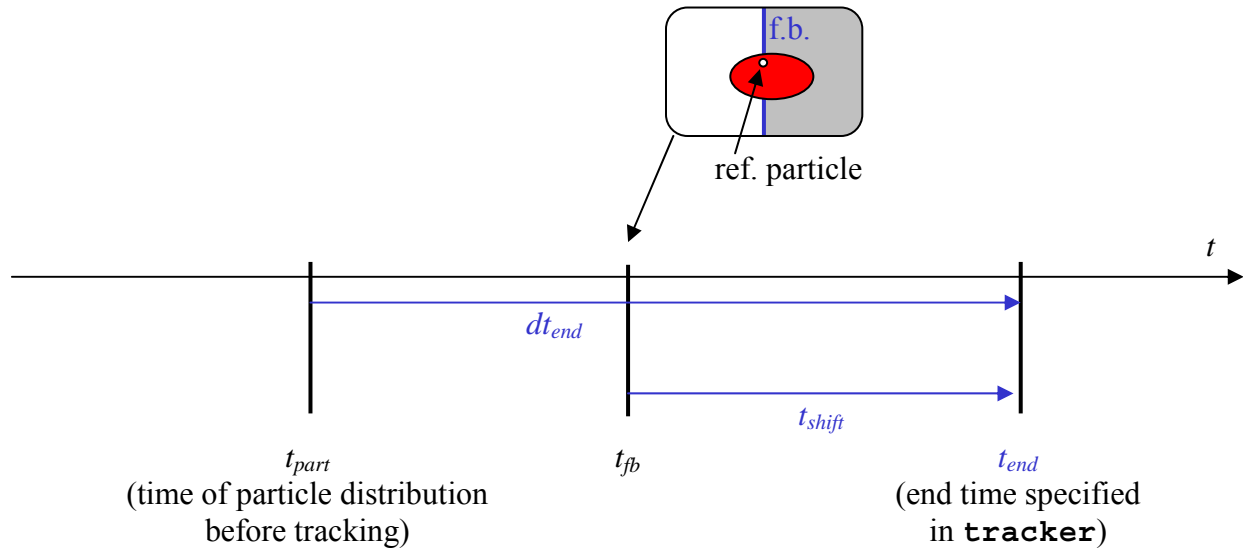
or by reference to a field boundary with marker (see **position** section)

$$\begin{aligned} \text{end\_time\_marker} &= \text{marker name} \\ \text{end\_time\_shift\_c0} &= t_{shift} \end{aligned}$$

The last option defines the time end relative to the time  $t_{fb}$  when the reference particle travels through the field boundary which is specified by marker name:

$$t_{end} = t_{fb} + t_{shift}$$

If the time grid is defined by an external file (see section **track\_step**, command **time\_grid\_file**) the tracking is executed until the last grid value before or equal to the end time is reached. Otherwise the recursive time step algorithm generates time steps that end exactly at  $t_{end}$ . The **tracker** section can be called more than once. Before a consecutive call of the **tracker** section it is for example possible to modify **track\_step** parameters or to call the **monitor** section.



Example:

```
tracker{end_time_marker=d4b,end_time_shift_c0=0.10}
```

## 4.6. Section: forces

identifier	argument	unit / type
<b>type</b>	<b>none</b> / <b>projected</b> / <b>csr_p_to_p</b> / <b>csr_g_to_p</b> / <b>csr_p_to_m</b> / <b>csr_g_to_m</b>	
<b>shape</b>	<b>sphere</b> / <b>ellipsoid</b>	
<b>sigma_long</b>	value ( $\sigma_{  }$ ) / <b>relative</b> / <b>file</b>	length / number > 0
<b>relative_long</b>	value ( $\sigma_{  rel}$ )	number > 0
<b>sigma_rad</b>	value ( $\sigma_r$ ) / <b>file</b>	length / number > 0
<b>sigma_vert</b>	value ( $\sigma_v$ ) / <b>relative</b> / <b>file</b>	length / number > 0
<b>relative_vert</b>	value ( $\sigma_{vrel}$ )	number > 0
<b>sigma_file</b>	file name	character string
<b>shield</b>		
<b>shield_max</b>		
<b>use_old_mesh</b>	<b>yes</b> / <b>no</b>	
<b>par1</b>		
<b>par2</b>	<i><b>M</b></i>	integer > 0
<b>par4</b>		number
<b>par5</b>		number
<b>wake_file</b>	file name	character string

#### 4.6.1. Introduction to the Different CSR Models

CSRtrack provides several models for the calculation of self-forces. The type of the model is specified by the command **type** with the possible choices:

**none / projected / csr\_p\_to\_p / csr\_g\_to\_p / csr\_p\_to\_m / csr\_g\_to\_m**

The parameter **none** causes particle tracking without self forces. If **type** is set to **projected**, CSRtrack uses a simple and very efficient model that neglects transverse dimensions of the source distribution, transverse forces, the transverse dependency of longitudinal forces as well as space charge effects. This model is based on a gaussian sub-bunch approach: all source particles are replaced by sub-bunches with corresponding strengths and longitudinal offsets. Therefore the three dimensional distribution of point particles is approximated by a smooth line charge density. The calculation of longitudinal fields neglects deformations of the *retarded* density function.

The method '**csr\_p\_to\_p**' replaces all source particles by three dimensional gaussian sub-bunches with individual strength and trajectory but with the same shape. It neglects vertical offsets and vertical particle motion. As all 'point' to point (or more precise sub-bunch to point) interactions have to be calculated, the numerical effort increases quadratically with the number of particles. The method '**csr\_g\_to\_p**' is based on the same sub-bunch approach and the same 'point' to point interactions, but it uses a pseudo green's function for the field of a sub-bunch. Before each computation of 'point' to point interactions, the electromagnetic field is calculated on a mesh in the horizontal plane for a 'typical' sub-bunch. The trajectory of other sub-bunches can be fitted to the trajectory of the 'typical' sub-bunch by a coordinate transformation. The same transformation is used to calculate the electromagnetic fields of other sub-bunches from the meshed field.

New in version 1.2 are **csr\_p\_to\_m** and **csr\_g\_to\_m**. They have the same effect as **csr\_p\_to\_p** and **csr\_g\_to\_p**, but the forces are calculated from meshed electromagnetic field values.

#### 4.6.2. Parameters for the projected Force

This model uses one dimensional Gaussian sub-bunches. There are three possibilities to define their longitudinal rms length. Either the longitudinal size  $\sigma_{||}$  is set directly by the command

**sigma\_long =  $\sigma_{||}$**

or it is defined relative to the rms length of the particle distribution by

**sigma\_long = relative**  
**relative\_long =  $\sigma_{||rel}$**

or it is set by an input file with

**sigma\_file = file name**  
**sigma\_long = file**

The last two possibilities allow to use sub-bunch dimensions that depend on time. The calculation of fields with time dependent sub-bunches neglects the change of the bunch length at retarded times. The use of bunch dimension files is described below.

#### 4.6.2.1. Current Smoothing: Gauss Filter and Position Averaging

The input for the 1d-current smoothing algorithm are the longitudinal position  $z_\nu$  and charge  $q_\nu$  of each particle. The continuous current is calculated as

$$I(z) = c_0 \sum q_\nu h\left(z - \hat{z}_\nu, \sigma_\parallel / \sqrt{2}\right) \quad \text{with} \quad h(z, \sigma) = \frac{1}{\sigma \sqrt{2\pi}} \exp\left(-\frac{1}{2} \left(\frac{z}{\sigma}\right)^2\right).$$

The sub-bunch length  $\sigma_\parallel$  is controlled by **sigma\_long**, or, if specified, by a data file (see previous paragraph). Usually the longitudinal positions  $z_\nu$  and  $\hat{z}_\nu$  are identical.

For non-systematic phase space distributions (random initial distribution, **identical charge of all particles**) a slight manipulation of the longitudinal particle positions helps to reduce the noise. This is for example possible by position averaging:

$$z_\nu^{(M)} = \frac{1}{2m+1} \sum_{\mu=\nu-m}^m z_\mu \quad \text{with} \quad m = \lfloor M/2 \rfloor,$$

supposed the particles are sorted by the longitudinal position. CSRtrack uses the superposition of two averaging operations:

$$\hat{z}_\nu = \frac{2}{3} z_\nu^{(0.8M)} + \frac{1}{3} z_\nu^{(1.5M)}.$$

Position averaging is activated by setting the optional parameter **par1** in the **forces** section to 1. The value of  $M$  has to be assigned to a second optional parameter **par2**.

Example:

```
forces{type=projected sigma_long=0.000008 par1=1 par2=10000}
```

The effect of the position averaging on the beam distribution is shown in the appendix.



#### 4.6.2.2. Projected Force and Wake per Length

In combination with the self-force of type **projected** it is possible to define and use a position independent longitudinal wake. This can be used to estimate the effect of the resistive wall wake.

The wake per length is defined by an ascii file with a table in the following format: each line has to end with **<CR>**. Each line that includes the comment character **!** is ignored. The numerical input (one number per line) is read from all other lines. The first number of the table is the rms sub-bunch length  $\sigma_{\text{table}}$  for which the wake potential has been calculated. The second number is the step width  $\delta_{\text{table}}$  of the table and the next two integers  $i_a$  and  $i_b$  define the longitudinal position of the first and last point in the table ( $\delta_{\text{table}}^{i_a}, \delta_{\text{table}}^{i_b}$ ). The next  $1 + i_b - i_a$  numbers are the values of wake table (unit: V/(Cm)).

In the calculation loop that is processed in the **tracker** section CSRtrack determines for each step the sub-bunch length  $\sigma_{\parallel}$  as specified and calculates the longitudinal current  $I(z)$  as described above. If the sub-bunch length  $\sigma_{\text{table}}$  is smaller than  $\sigma_{\parallel}/\sqrt{2}$  the wake  $W_{\sigma_{\parallel}/\sqrt{2}}$  is calculated by a convolution. If  $\sigma_{\text{table}}$  is larger than required CSRtrack uses the tabulated wake with modification and warning. Therefore the longitudinal self-field is calculated by the following convolution:

$$E_{c\parallel}(z) = \int \left\{ I(z - \xi) \left( a \cdot E_{\sigma_{\parallel}/\sqrt{2}}(\xi) + b \cdot W_{\sigma_{\parallel}/\sqrt{2}}(\xi) \right) \right\} d\xi$$

with  $a = 1 - \text{par4}$  and  $b = 1 - \text{par5}$ . The name of the file with the tabulated wake as well as the parameters **par4** and **par5** can be set in the **forces** section. The definition of a wake table is optional, the default values of **par4** and **par5** are zero.

Example:

```
forces{type=projected sigma_long=0.000008 par1=1 par2=10000
      shield=0.008
      wake_file=wake_cu_flat_2x4mm.dat
}
```

#### 4.6.3. Parameters for the **csr\_p\_to\_p** and **csr\_g\_to\_p** Forces

These models use Gaussian sub-bunches that are either spheres or ellipsoids:

**shape = sphere / ellipsoid**

The radius of spherical sub-bunches is defined in the same way as the longitudinal dimension of sub-bunches of the **projected** force. Ellipsoidal bunches have three rms parameters: the longitudinal size  $\sigma_{\parallel}$ , the horizontal (or radial) size  $\sigma_r$  and the vertical size  $\sigma_v$ .  $\sigma_{\parallel}$  and  $\sigma_v$  are either set directly, or relative to the corresponding rms dimension of the particle distribution, or by an

input file with sub-bunch dimensions.  $\sigma_r$  is either defined directly or by file. The calculation of fields with time dependent sub-bunches neglects the change of the bunch length at retarded times. The use of bunch dimension files is described below.

#### 4.6.4. Additional Parameters for the `csr_p_to_m` and `csr_g_to_m` Forces

Beyond the parameters above, `sbox` and `rbox` can be used to modify the longitudinal and radial step width of the (equidistant) mesh. The step widths are:  $\Delta s = \mathbf{sbox} \cdot \sigma_{||}$ ,  $\Delta r = \mathbf{rbox} \cdot \sigma_r$  with  $\sigma_{||}$ ,  $\sigma_r$  the longitudinal and radial rms dimension of the sub-bunches. The default values are `sbox = 0.5`, `rbox=0.5`. Mesh field values are used only for cells with at least four particles (observers) per cell, otherwise the field values are calculated directly. The additional output per calculation step looks like this:

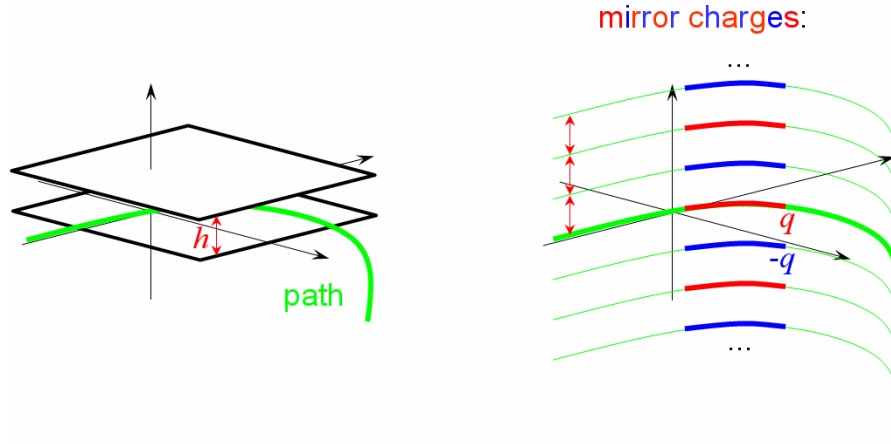
```
ctstep= 0.03000 -> ct= 10.77925
*** step_error/step_time= 4.98611017E-05
boxes = 1961 e_points= 5027 p_points= 7886
step_error/step_time= 0.00198496122
boxes = 1960 e_points= 5026 p_points= 7887
step_error/step_time= 6.39205063E-07
ctstep= 0.02581 -> ct= 10.80506
*** step_error/step_time= 5.22485114E-05
boxes = 1992 e_points= 5070 p_points= 7712
step_error/step_time= 0.00203230079,
```

where ‘`boxes`’ is the number of mesh cells (with at least four particles) that are calculated, ‘`e_points`’ is the number of edge points of these cells and ‘`p_points`’ is the number of particles (observers) that are calculated directly.

Sometimes it is possible to reuse the Green’s function (for forces `csr_g_to_p` and `csr_g_to_m`) for successive tracking iterations (e.g. if sufficient memory space is available to store the function on the complete mesh). The command `use_old_mesh = yes/no` can be used to enable/disable this possibility.

#### 4.6.5. Shielding

the commands `shield= ...` and `shield_max=...` are used to specify shielding by perfect conducting horizontal planes; `shield` defines the distance  $h$  between the conducting planes and `shield_max` defines the maximal vertical distance to which mirror charges are taken into account.



**Work in progress:** the mesh of the Green's function is not optimized for wave fronts that are created by mirror charges; therefore the global mesh density is increased. This solution is not optimal concerning mesh resolution and computational efficiency.

**Attention:** Shielding causes a dispersive propagation of electromagnetic fields; a time grid (see `track_step`) that works for calculations without shielding is not necessarily sufficient with shielding (and otherwise); it is recommended to observe the particle coordinates and forces at few test particles for all time steps (see `online_monitor`, `type = phase`, `particle = m`) and to adjust the grid if required.

#### 4.6.6. Setting Sub-bunch Sizes from File

Sub-bunch sizes can be defined directly by file. The file name is set with the command

```
sigma_file = file name
```

CSRtrack expects an ascii input file with the specified name in the input- or root-directory (see `io_path`). It reads a list of values for time and dimensions (units = time, length, length, length):

```

t1  σ//1  σr1  σv1
t2  σ//2  σr2  σv2
t3  σ//3  σr3  σv3
t4  σ//4  σr4  σv4
...
tn  σ//n  σrn  σvn

```

(Each input line has to start with four numbers, the rest is ignored.) The sub-bunch dimensions are calculated by linear interpolation along the time axis (see `track_step`, time grid). The interpolated longitudinal dimension is used if the argument `file` is assigned to `sigma_long`. Corresponding assignments can be used for the transverse dimensions. The output file created by the steps-monitor (see `online_monitor`, `type=steps`) can be used as sub-bunch dimension file, e.g. to perform calculations with exactly the same dimensions a in an earlier run.

#### 4.6.7. Examples

The CSR field of ellipsoidally shaped sub-bunches is calculated with the Green's function method (`csr_g_to_p`). The bunch length at different positions along the beam line is read from the file `my_file.dat`, the horizontal size is fixed and the vertical scales with the vertical size of the beam:

```
forces{type=csr g to p,
      shape=ellipsoid
      sigma file=my file.dat
      sigma long=file
      sigma rad =0.0003
      sigma vert=relative,relative vert=1.0
}
```

If meshed forces and shielding are used, the general format of the forces section will look like this:

```
forces{type = ...,
      sbx = ..., rbox=...,
      use old mesh = ...,
      shield= ..., shield_max=... }
```

#### 4.7. Sections: monitor and online\_monitor

a) Concept: The **monitor** section is used to write particles properties and forces before or after a tracking calculation to file while monitors defined in the **online\_monitor** section are served during the tracking. As fields and forces are calculated during the tracking, which is activated in the **tracker** section, they are undefined before the **tracker** section has been called.

b) **monitor** section:

identifier	argument	unit / type
<b>name</b>	file name	character string
<b>format</b>	<b>fmt1 / fmt2 / fmt3</b>	

The name of the output file is defined by **name** = file name. The file formats are described below.

c) **online\_monitor** section:

identifier	argument	unit / type
<b>name</b>	file name	character string
<b>type</b>	<b>phase / subbunch /</b>	

	<b>steps</b>	
<b>format</b>	<b>fmt1 / fmt2 / fmt3</b>	
<b>particle</b>	value ( <i>m</i> )	integer
<b>start_time_c0</b>	value ( <i>t<sub>start</sub></i> ) / <b>now</b>	time / number
<b>start_time_marker</b>	marker name	character string
<b>start_time_shift_c0</b>	value ( <i>dt<sub>start</sub></i> )	time / number
<b>end_time_c0</b>	value ( <i>t<sub>end</sub></i> )	time / number
<b>end_time_marker</b>	marker name	character string
<b>end_time_shift</b>	value ( <i>dt<sub>end</sub></i> )	time / number
<b>time_step_c0</b>	value ( <i>t<sub>step</sub></i> ) / <b>all</b>	time / number

There are three different monitor types:

**type = phase / subbunch / steps**

The type **phase** is used to monitor properties of an individual particle or of the complete distribution.

d) Monitor Events: Online monitors are served during the tracking each time when a monitor event is fulfilled. In principle monitor events are defined by the start time  $t_{start}$ , end time  $t_{end}$  and time step  $t_{step}$ , but the so defined monitor grid does usually not coincide with the **time grid** defined in the section **track\_step**. Therefore monitor events are related always to the next following point on the time grid.  $t_{start}$  and  $t_{end}$  can be specified either directly by

**start\_time\_c0** =  $t_{start}$  / **now**  
**end\_time\_c0** =  $t_{end}$

or by reference to a field boundary with marker:

**start\_time\_marker** = marker name  
**start\_time\_shift\_c0** =  $dt_{start}$   
**end\_time\_marker** = marker name  
**end\_time\_shift\_c0** =  $dt_{end}$

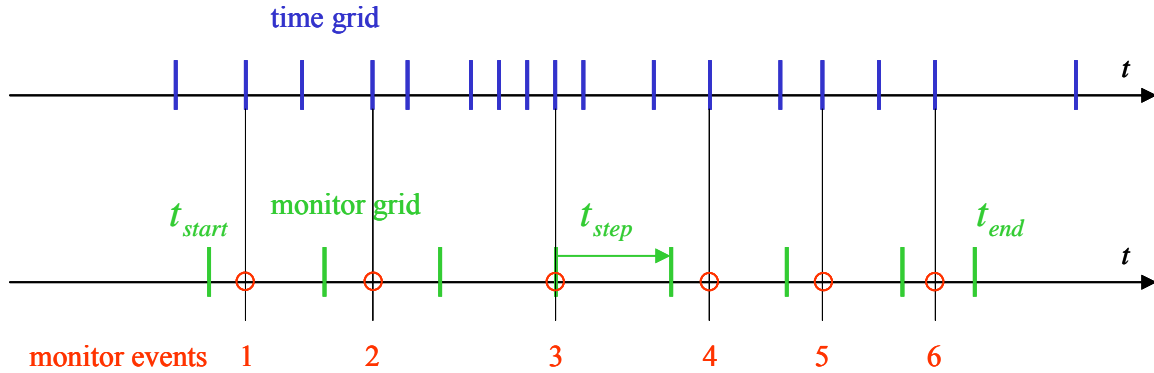
The second possibility defines the time relative to the time  $t_{fb}$  when the reference particle travels through the field boundary which is specified by marker name:

$$t_{start} = t_{fb} + dt_{start} \quad \text{and/or} \quad t_{end} = t_{fb} + dt_{end}$$

The time step is defined by

**time\_step\_c0** =  $t_{step}$  / **all**

The argument **all** has the effect that all points on the time grid are monitored.



e) Name convention for output files: Phase monitors of the full particle distribution (**type=phase, particle=all**) create for each monitor event an individual file. The file name is derived from the argument of the **name** command and the event number as follows:

**name=<string>.<extension>**

1<sup>st</sup> monitor event → file name = **<string>0001.<extension>**

2<sup>nd</sup> monitor event → file name = **<string>0002.<extension>**

3<sup>rd</sup> monitor event → file name = **<string>0003.<extension>**

...

The numbering of monitor events depends on the definition of  $t_{start}$  and  $t_{step}$  that can be defined individually for different monitors. Therefore events with the same number that have been recorded by different monitors do not necessarily coincide.

f) Example:

```
online_monitor{name=x.fmt3,type=phase,format=fmt3,particle=all
  start_time_c0=now
  end_time_marker=d4b,end_time_shift_c0=1.0
  time_step_c0=0.02
}
```

#### 4.7.1.online\_monitor: type=phase

Writes files containing phase space information of all or selected particles.

a) **format = fmt1, particle = all**: This format is compatible to the corresponding input format of the **particles** section. The output file can be used as input file for a later (restarted) calculation. Each line of the output file is written with the fortran format (7(1x,e22.15)). The last six numbers in the first line ( $r_1, r_2, r_3, r_4, r_5, r_6$ ) are set to zero.

b) **format = fmt2, particle = all**: This format is compatible to the corresponding input format of the **particles** section. The output file can be used as input file for a later

(restarted) calculation. Each line of the output file is written with the fortran format (7(1x,e22.15)). The last six numbers in the first line ( $r_1, r_2, r_3, r_4, r_5, r_6$ ) are set to zero.

c) **format = fmt3 , particle = all**: Each line of the output file is written with the fortran format (10(1x,e22.15),2(1x,i1)). The output file has the following structure:

```

t   γr  0   0   0   0   0   σs  σr  σz  0   0
hr h'r vr v'r 0   δer q1 fs,1 fh,1 fv,1 Ls,1 Lt,1
h2 h'2 v2 v'2 s2 δe2 q2 fs,2 fh,2 fv,2 Ls,2 Lt,2
h3 h'3 v3 v'3 s3 δe3 q3 fs,3 fh,3 fv,3 Ls,3 Lt,3
...
hn h'n vn v'n sn δen qn fs,n fh,n fv,n Ls,n Lt,n

```

$t$  is the time of the distribution.  $\gamma_r$  is the Lorentz factor  $\gamma$  that corresponds to the reference momentum (see **particles** section).  $\sigma_s$ ,  $\sigma_r$ , and  $\sigma_z$  are the longitudinal, radial and vertical rms sub-bunch dimensions that were used for the force calculation (see **forces** section). The particle coordinates ( $h_i, v_i, s_i$ ) and slopes ( $h'_i, v'_i$ ) are defined relative to the reference trajectory and the reference particle: ( $h_i, h'_i$ ) are horizontal parameters, ( $v_i, v'_i$ ) are the offset and slope in vertical- or  $z$ -direction and  $s_i$  is the path-length difference with respect to the reference particle.  $\delta e_i$  is the relative energy deviation normalized to the energy that corresponds to the reference momentum. ( $f_{s,i}, f_{h,i}, f_{v,i}$ ) are the force components with:

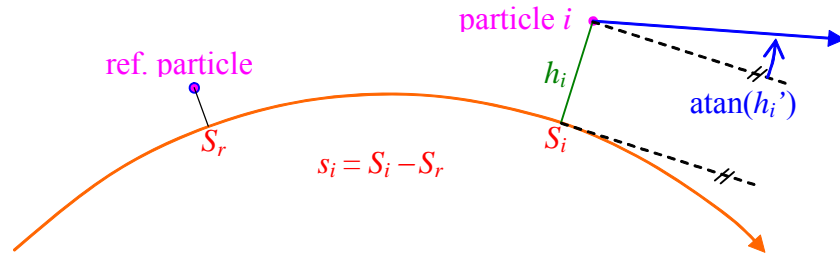
$$\mathbf{u}_{s,i} = \mathbf{p}_i / p_i$$

$$\mathbf{u}_{h,i} = \mathbf{u}_z \times \mathbf{u}_{s,i}$$

$$\mathbf{u}_{v,i} = \mathbf{u}_{s,i} \times \mathbf{u}_{h,i}$$

$$\mathbf{f}_i = f_{s,i} \mathbf{u}_{s,i} + f_{h,i} \mathbf{u}_{h,i} + f_{v,i} \mathbf{u}_{v,i}$$

In the present version of CSRtrack there is no input format available that allows to set or reset the source and test flags ( $L_{s,i}, L_{t,i}$ ). Therefore they are always set (=1). The source flag determines if a certain particle contributes to the generation of self-fields or not. A particle is tracked with self and external forces if the test flag is set, otherwise only external fields affect the motion of this particle.



d) **format = fmt1, particle = m**: For each monitor event, a new line with the actual phase space information of particle  $m$  is added to the output file. The file is of the following structure:

$$\begin{array}{cccccccc}
 t_1 & \delta x_m^{(t1)} & \delta y_m^{(t1)} & \delta z_m^{(t1)} & \delta p x_m^{(t1)} & \delta p y_m^{(t1)} & \delta p z_m^{(t1)} & q_m \\
 t_2 & \delta x_m^{(t2)} & \delta y_m^{(t2)} & \delta z_m^{(t2)} & \delta p x_m^{(t2)} & \delta p y_m^{(t2)} & \delta p z_m^{(t2)} & q_m \\
 t_3 & \delta x_m^{(t3)} & \delta y_m^{(t3)} & \delta z_m^{(t3)} & \delta p x_m^{(t3)} & \delta p y_m^{(t3)} & \delta p z_m^{(t3)} & q_m \\
 \dots & & & & & & & 
 \end{array}$$

The first column ( $t_1, t_2, t_3 \dots$ ) is the time of the monitor event (unit = time). The next seven rows describe the position, momentum and charge in the same way as for the corresponding input format (**fmt1**,  $x_p, y_p, z_p$ -coordinates). This means the coordinates of the reference particle ( $m = 1$ ) are absolute, the coordinates of all other particles ( $m > 1$ ) are relative to the reference particle.

e) **format = fmt2, particle = m**: For each monitor event, a new line with the actual phase space information of particle  $m$  is added to the output file. The file is of the following structure:

$$\begin{array}{cccccccc}
 t_1 & \delta s_m^{(t1)} & \delta h_m^{(t1)} & \delta v_m^{(t1)} & \delta p s_m^{(t1)} & \delta p h_m^{(t1)} & \delta p v_m^{(t1)} & q_m \\
 t_2 & \delta s_m^{(t2)} & \delta h_m^{(t2)} & \delta v_m^{(t2)} & \delta p s_m^{(t2)} & \delta p h_m^{(t2)} & \delta p v_m^{(t2)} & q_m \\
 t_3 & \delta s_m^{(t3)} & \delta h_m^{(t3)} & \delta v_m^{(t3)} & \delta p s_m^{(t3)} & \delta p h_m^{(t3)} & \delta p v_m^{(t3)} & q_m \\
 \dots & & & & & & & 
 \end{array}$$

The first column ( $t_1, t_2, t_3 \dots$ ) is the time of the monitor event (unit = time). The next seven rows describe the position, momentum and charge in the same way as for the corresponding input format (**fmt2**). This means the coordinates of the reference particle ( $m = 1$ ) are absolute, the coordinates of all other particles ( $m > 1$ ) are relative to the reference particle ( $\mathbf{u}_s, \mathbf{u}_v, \mathbf{u}_h$ -base).

f) **format = fmt3, particle = m**: For each monitor event, a new line with the actual phase space coordinates and forces of particle  $m$  is added to the output file. The file is of the following structure:

$$\begin{array}{cccccccccccccc}
 t_1 & h_m^{(t1)} & h_m^{\prime(t1)} & v_m^{(t1)} & v_m^{\prime(t1)} & s_m^{(t1)} & e_m^{(t1)} & q_m & f_{s,m}^{(t1)} & f_{h,m}^{(t1)} & f_{v,m}^{(t1)} & L_{s,m} & L_{t,m} \\
 t_2 & h_m^{(t2)} & h_m^{\prime(t2)} & v_m^{(t2)} & v_m^{\prime(t2)} & s_m^{(t2)} & e_m^{(t2)} & q_m & f_{s,m}^{(t2)} & f_{h,m}^{(t2)} & f_{v,m}^{(t2)} & L_{s,m} & L_{t,m} \\
 t_3 & h_m^{(t3)} & h_m^{\prime(t3)} & v_m^{(t3)} & v_m^{\prime(t3)} & s_m^{(t3)} & e_m^{(t3)} & q_m & f_{s,m}^{(t3)} & f_{h,m}^{(t3)} & f_{v,m}^{(t3)} & L_{s,m} & L_{t,m} \\
 \dots & & & & & & & & & & & & 
 \end{array}$$

The first column ( $t_1, t_2, t_3 \dots$ ) is the time of the monitor event (unit = time). The next eleven rows describe the position, momentum, charge and force in the same way as for the corresponding input format (**fmt3**).



#### **4.7.2. online\_monitor: type = subbunch**

Writes a file containing the sub-bunch dimensions along the beam line.

#### **4.7.3. online\_monitor: type = steps**

Writes a file containing the (longitudinal) position at the end of each calculation step, the tracking error at this position and the number of tracking iterations.

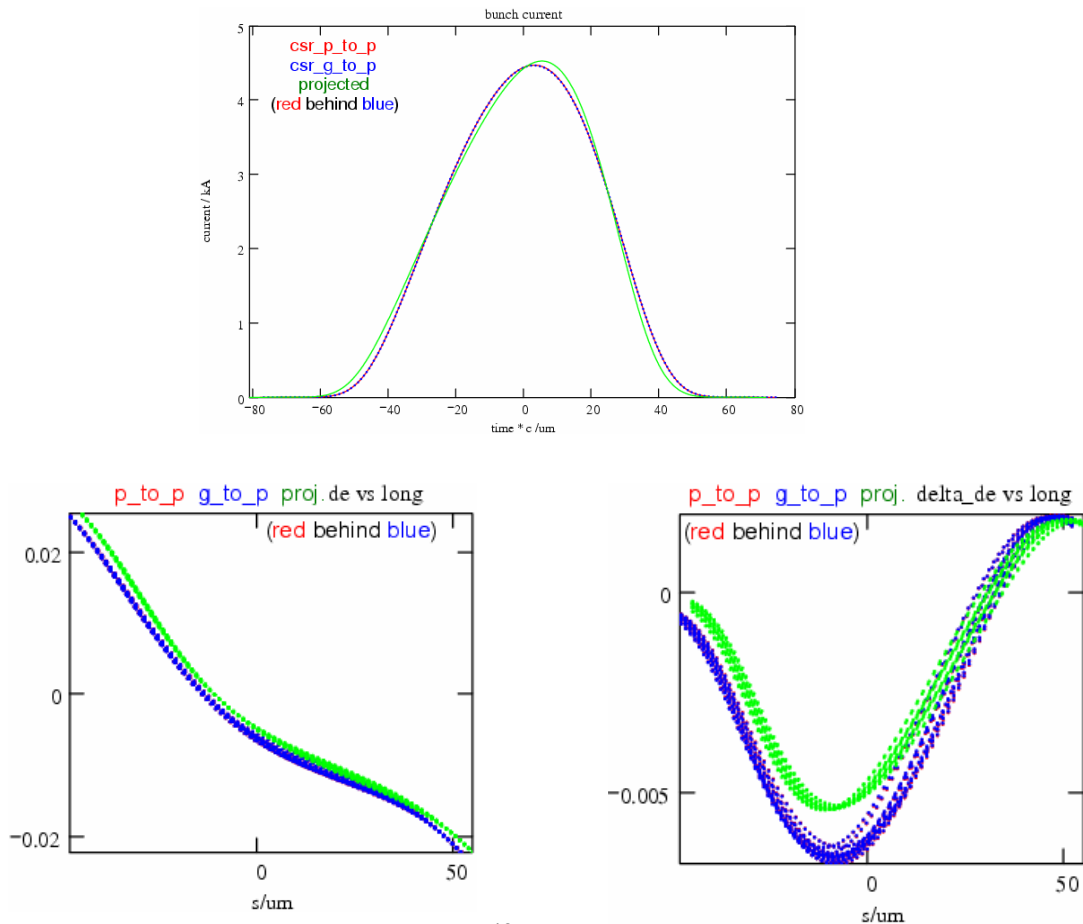
# 5. Appendix

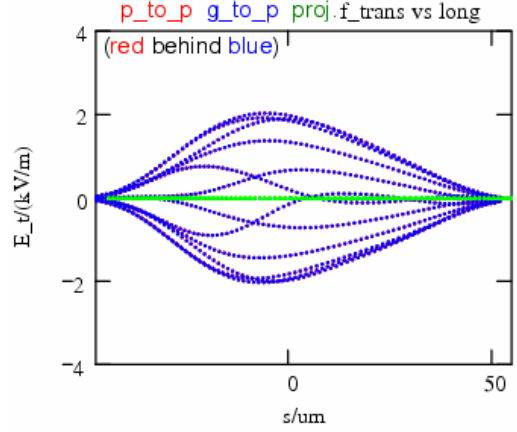
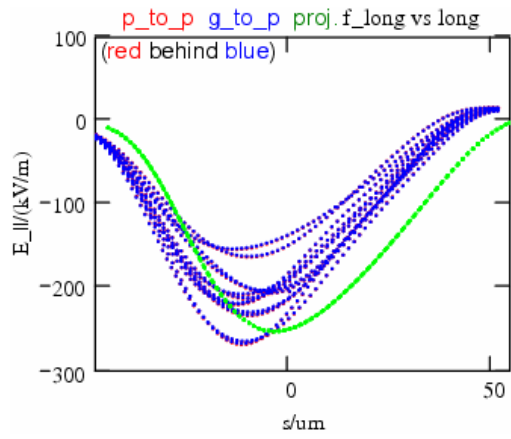
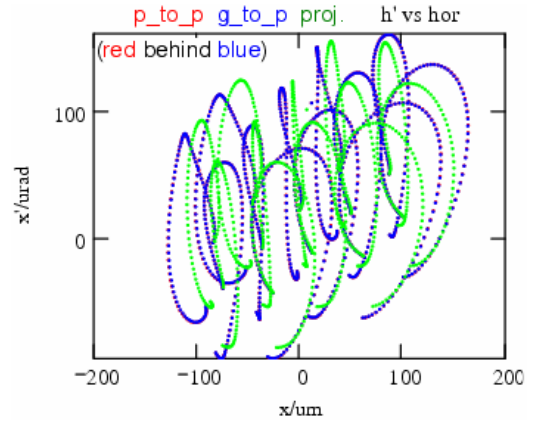
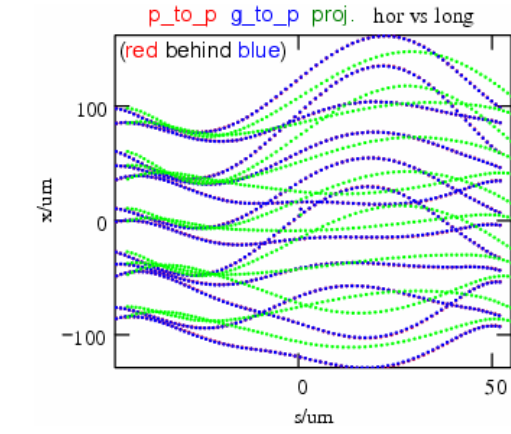
## 5.1. CSRtrack Units

dimension	normalization
length	1 m
time	1 m / $c_0$
momentum	1 eV / $c_0$
charge	1 C
angle	1 deg

## 5.2. Results for Example Case

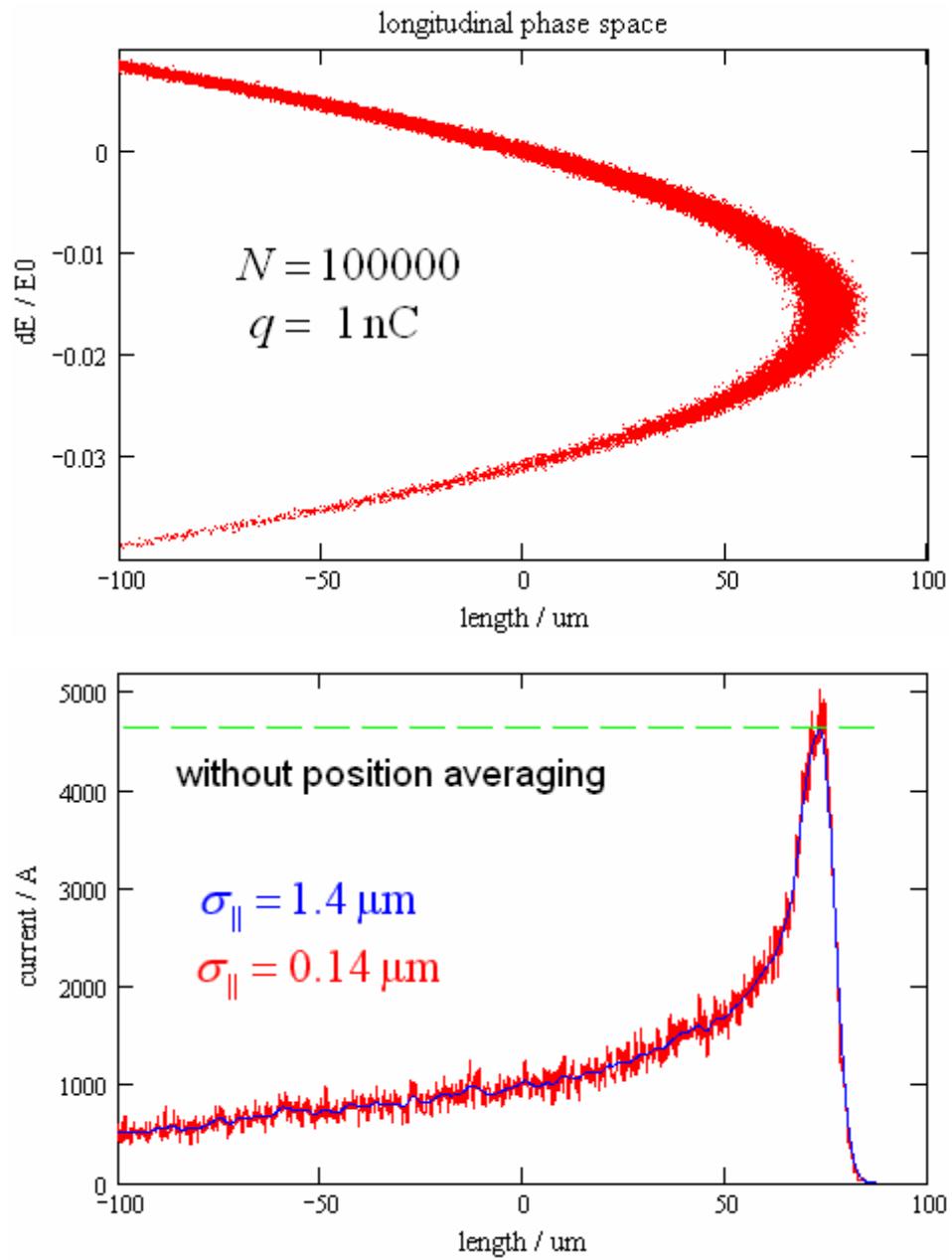
Comparison of calculations with force types **p\_to\_p**, **g\_to\_p** and **projected**. The data points for force type **p\_to\_p** are plotted in red, for **g\_to\_p** in blue and for **projected** in green. Usually the red points are hidden by the blue ones.

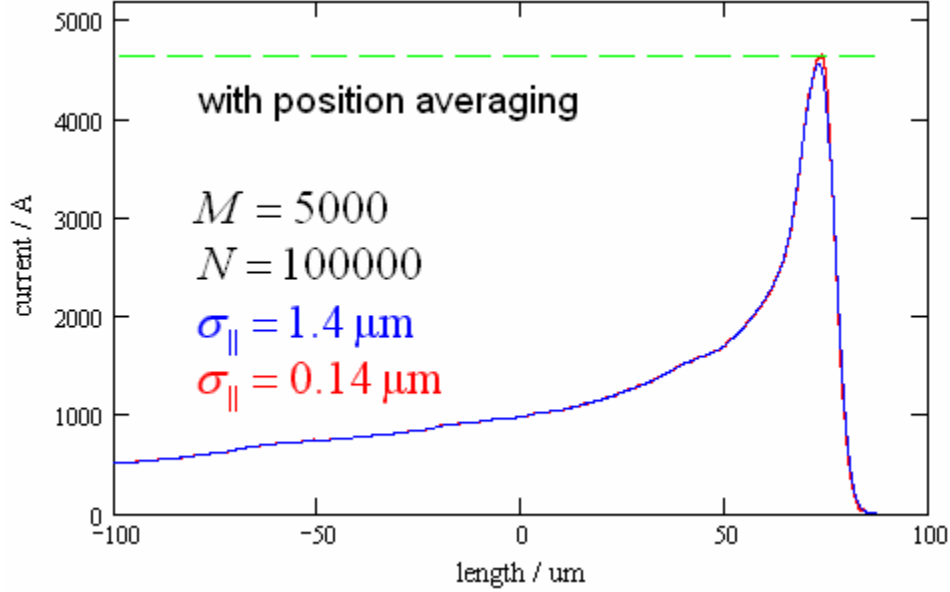




Caption:

### 5.3. Example for Position Averaging Pulse Smoothing Technique





## 5.4. Fixed Bugs

### In Version 1.0:

The sub-bunch length for the self-force of type **projected** was slightly wrong: the longitudinal self-field  $E_{c\parallel}$  is calculated as convolution of the longitudinal 1d-current  $I_{\parallel}$  with the CSR-field  $E_{\sigma_{\parallel}/\sqrt{2}}$  of a Gaussian sub-bunch. The 1d-current  $I_{\parallel}$  is computed on an equidistant mesh by substitution of all point particles by sub-bunches of the length  $\sigma_{\parallel}/\sqrt{2}$ . By mistake the sub-bunch length for the calculation of  $E_{\sigma_{\parallel}/\sqrt{2}}$  was  $\sigma_{\parallel}$  instead of  $\sigma_{\parallel}/\sqrt{2}$ . Therefore the effective sub-bunch length was  $\sqrt{1\frac{1}{2}} \cdot \sigma_{\parallel} \approx 1.22\sigma_{\parallel}$  instead of  $\sigma_{\parallel}$ . This has been fixed.

## 6. Bibliography

- [1] E. Saldin, E.Schneidmiller, M.Yurkov: Radiative Interaction of Electrons in a Bunch Moving in an Undulator. NIM A417 (1998) 158-168.
- [2] M. Dohlus: Two Methods for the Calculation of CSR Fields. TESLA-FEL-2003-05
- [3] M. Dohlus, A. Kabel, T. Limberg: Efficient Field Calculation of 3D Bunches on General Trajectories. NIM A445 (2000) 338-342.